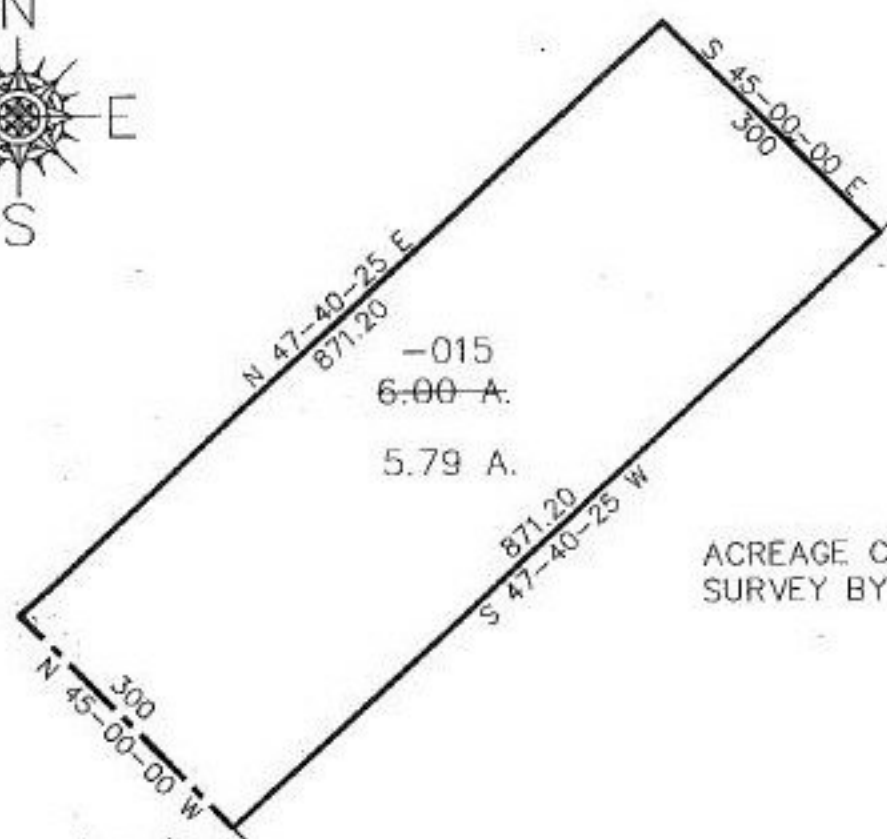


#22246-D
NO. 22246-D

PARENT PARCEL: 12-00-083-000-015

CHILD PARCEL: N/A

STARTING POINT: INT CL. ROOT ROAD & NWLY LINE CLEVELAND, CINCINATI, CHICAGO & STL RR



-015
~~6.00~~ A.
5.79 A.

ACREAGE CORRECTION PER
SURVEY BY ERIC J. NELSON

ROOT ROAD

APPROVED
LORAIN CO.
MAP DEPT.
DATE 7-17-97
PAGE 12-A
BY *[Signature]*
VOID AFTER 22246-D

P.O.B.



SPLITS/DEEDS PROCESSED
LORAIN COUNTY TAX MAP DEPARTMENT
226 MIDDLE AVE. ELYRIA, OHIO

SURVEYED BY: ERIC J. NELSON
CLOSURE: 0.00 : 10.000
MAP PAGE(S): 12-A
APPROVED BY: RFB DATE: 07/08/97
SCALE: 1"=200'