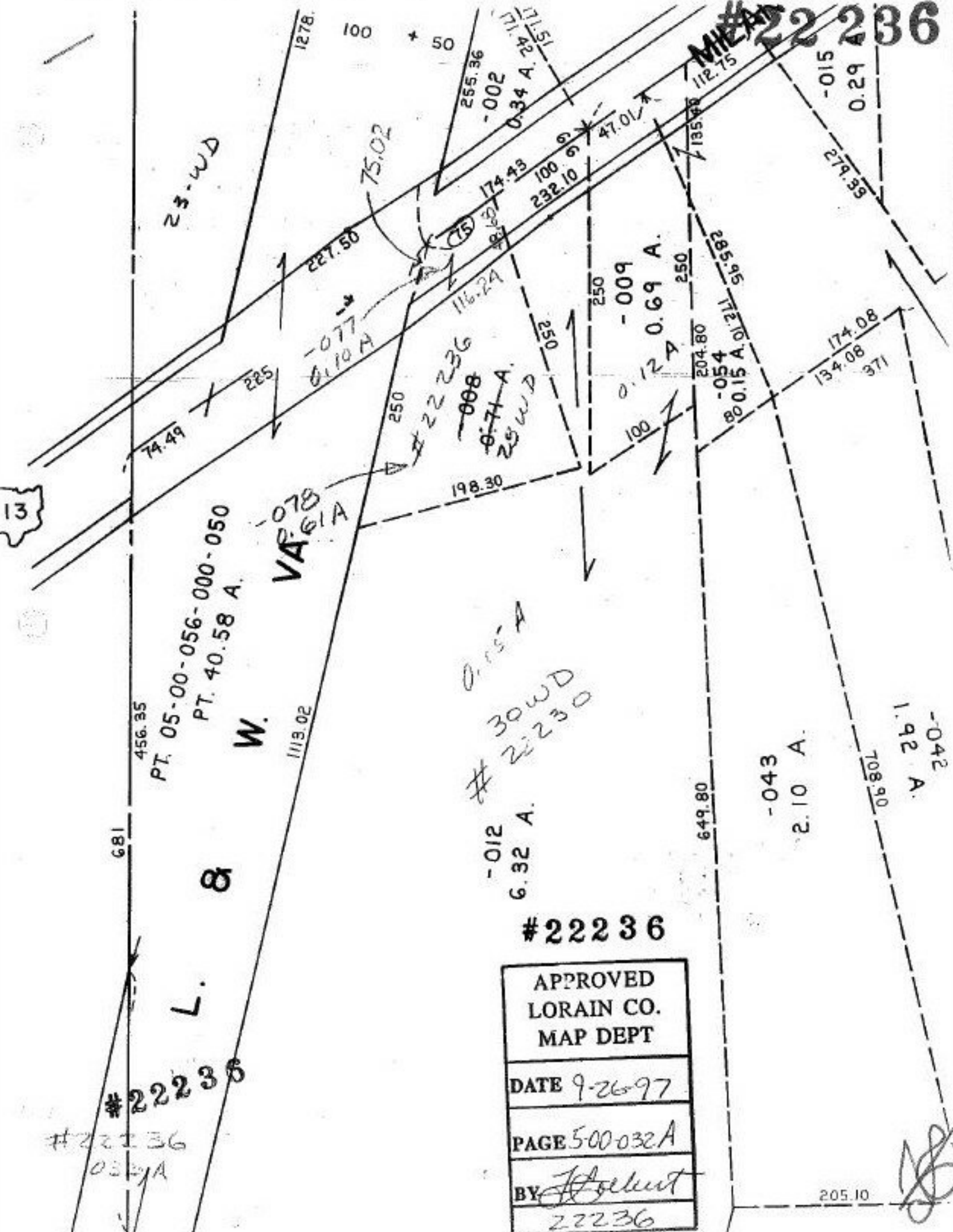


MILE # 22236



13

681

456.95

PT. 05-00-056-000-050
PT. 40.58 A.

W.

1113.02

L. & W.

#22236

#22236
032A

VA-078
61A

198.30

0.15 A
30WD
#22236

-012
6.32 A.

#22236

APPROVED LORAIN CO. MAP DEPT
DATE 9-26-97
PAGE 500-032A
BY <i>[Signature]</i>
22236

649.80

-043
2.10 A.

108.90

-042
1.92 A.

205.10

[Handwritten Signature]