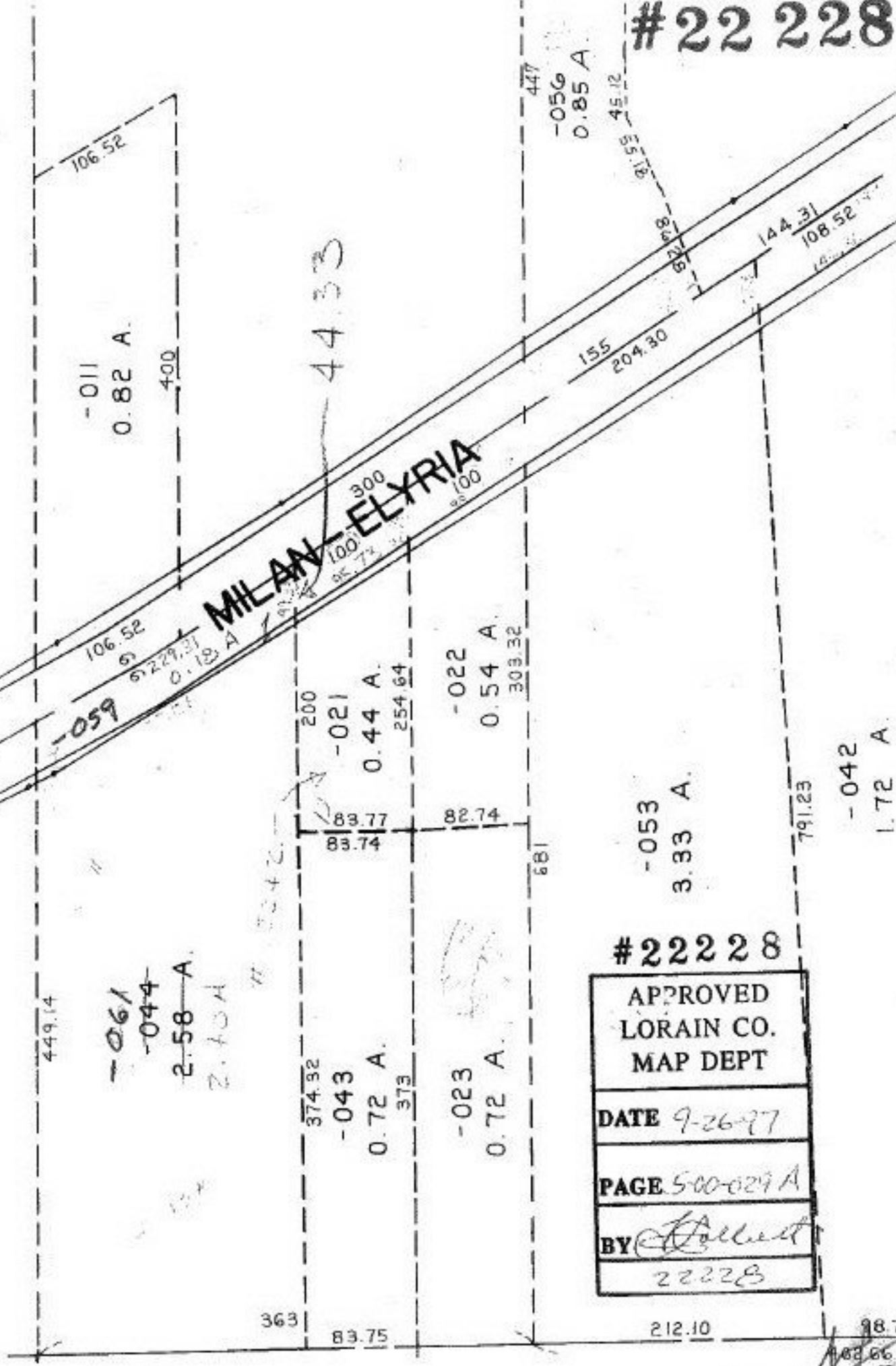


#22 228

113

MILAN-ELYRIA



-011
0.82 A.

-059

449.14

~~-061~~
~~-044~~
2.58 A.
2.70 A.

44.33

-021
0.44 A.

-043
0.72 A.

-022
0.54 A.

-023
0.72 A.

-056
0.85 A.

-053
3.33 A.

-042
1.72 A.

#22228

APPROVED
LORAIN CO.
MAP DEPT

DATE 9-26-97

PAGE 500-029 A

BY *L. Bell*
22228

SEE 5