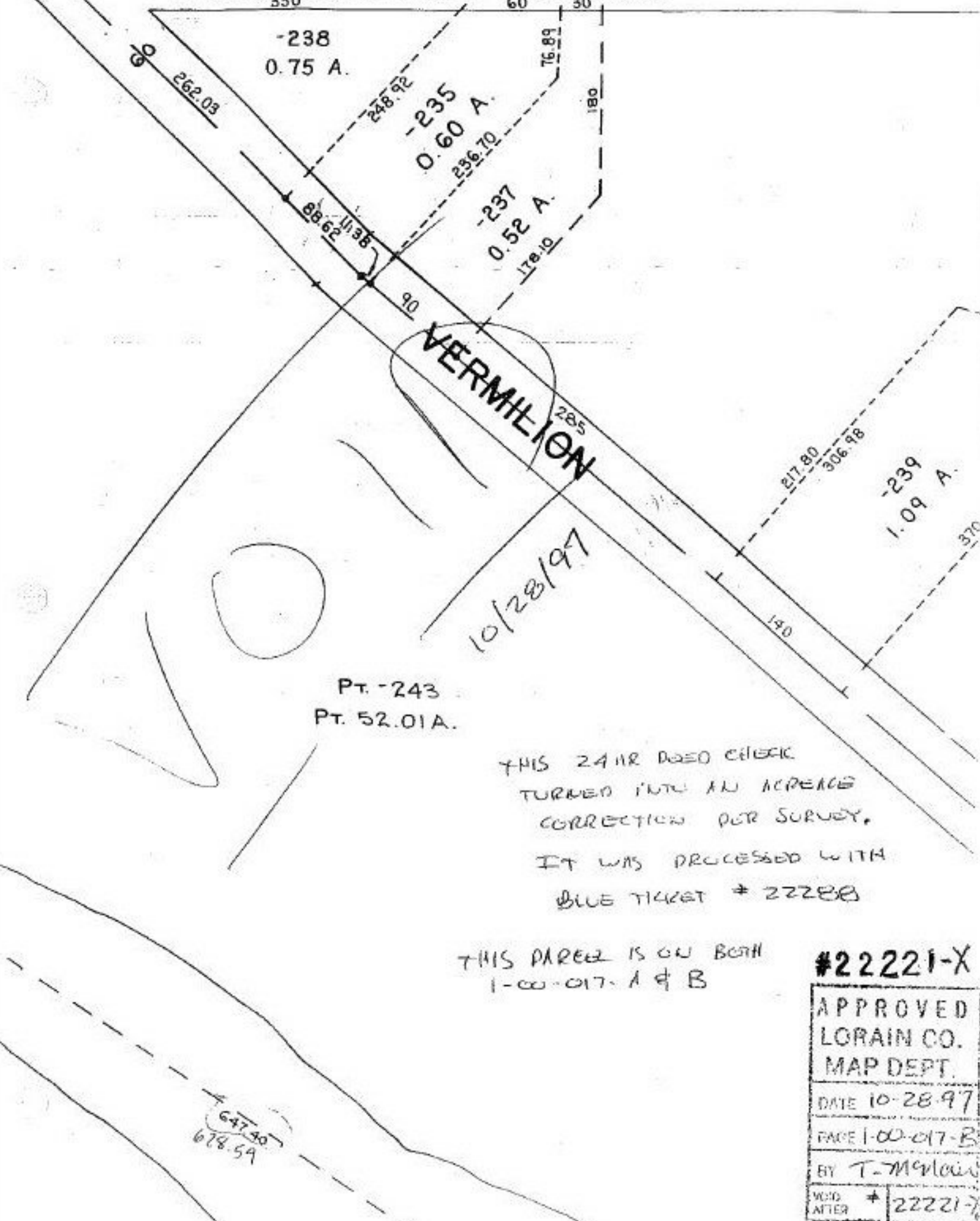


# BROWNHELM STATION



Pt. -243  
Pt. 52.01A.

10/28/97

THIS 241R DDED CIRCULAR  
TURNED INTO AN ACPEACE  
CORRECTION PER SURVEY.  
IT WAS PROCESSED WITH  
BLUE TICKET # 22288

THIS PARCEL IS ON BOTH  
1-00-017-A & B

**#22221-X**

APPROVED	
LORAIN CO.	
MAP DEPT.	
DATE 10-28-97	
PAGE 1-00-017-B	
BY T-McLain	
VOID AFTER	# 22221-X

647.40  
678.59