

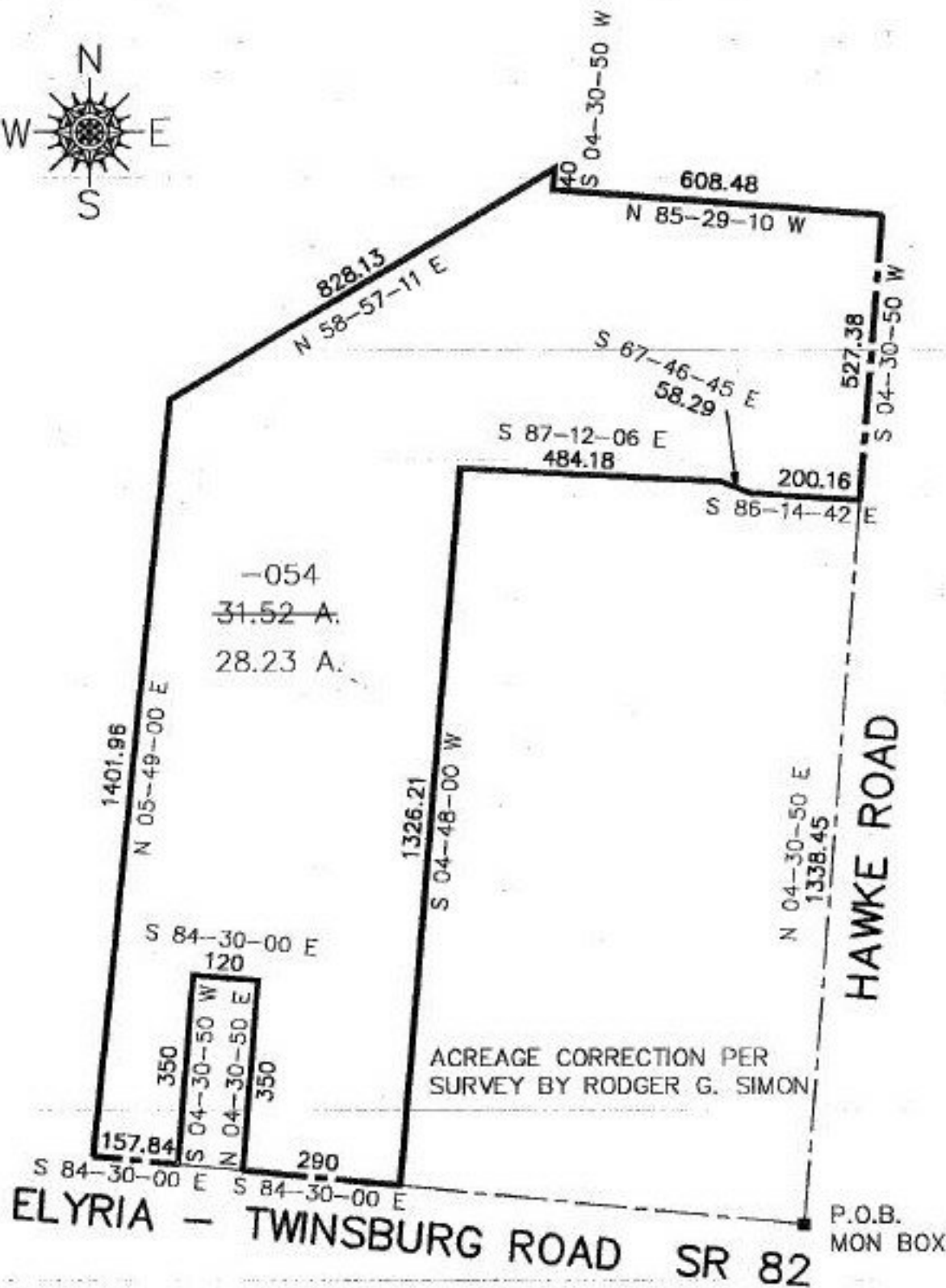
#22217-D

PARENT PARCEL: 11-00-006-000-054

CHILD PARCEL: N/A

STARTING POINT: INT CL ELYRIA-TWINSBURG RD & CL HAWKE RD

NO. 22217-D



ACREAGE CORRECTION PER SURVEY BY RODGER G. SIMON



SPLITS/DEEDS PROCESSED

LORAIN COUNTY TAX MAP DEPARTMENT
226 MIDDLE AVE. ELYRIA, OHIO

SURVEYED BY: RODGER G. SIMON

CLOSURE: 0.02 : 10.000

MAP PAGE(S): 11-00-006 B

APPROVED BY: RFB DATE: 06/25/97

SCALE: 1" = 300