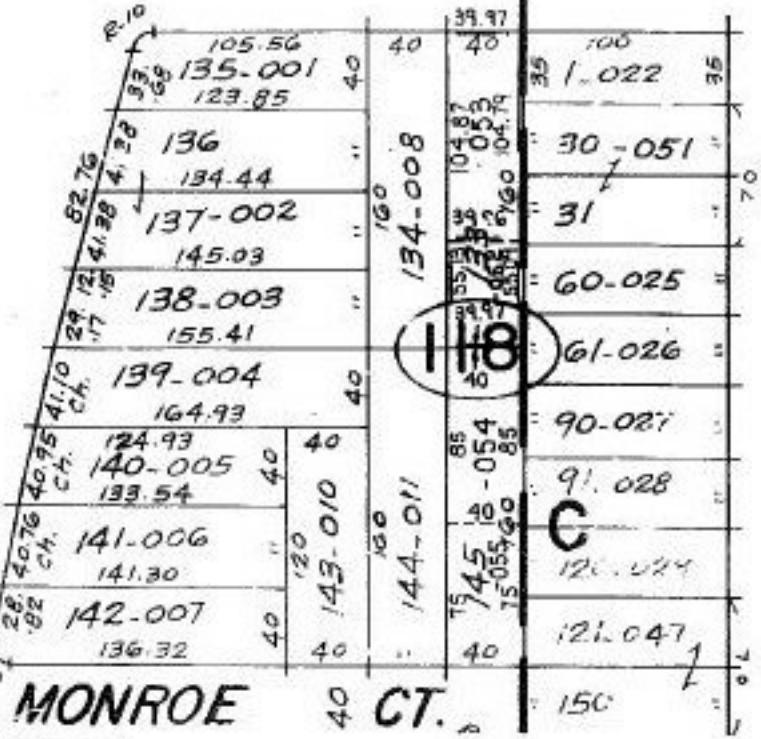
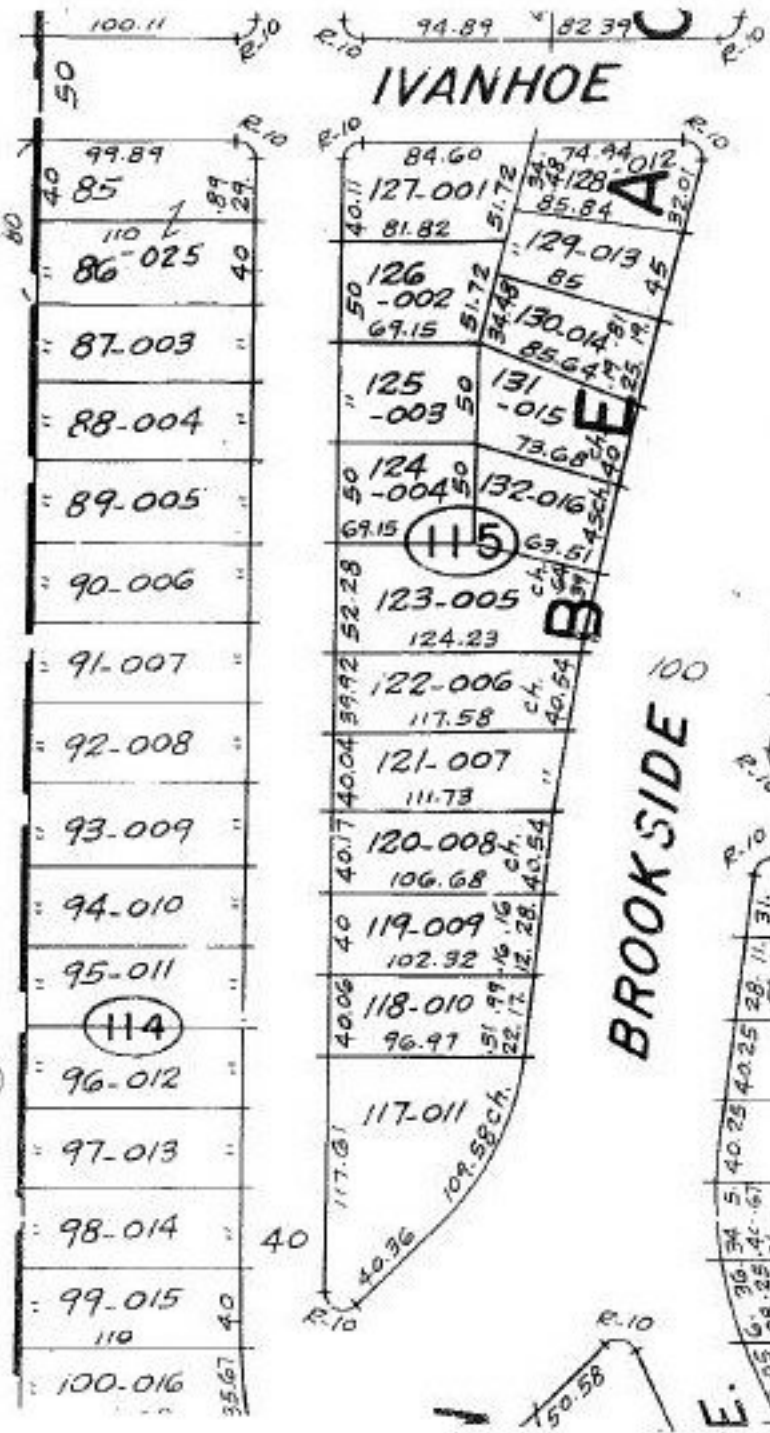


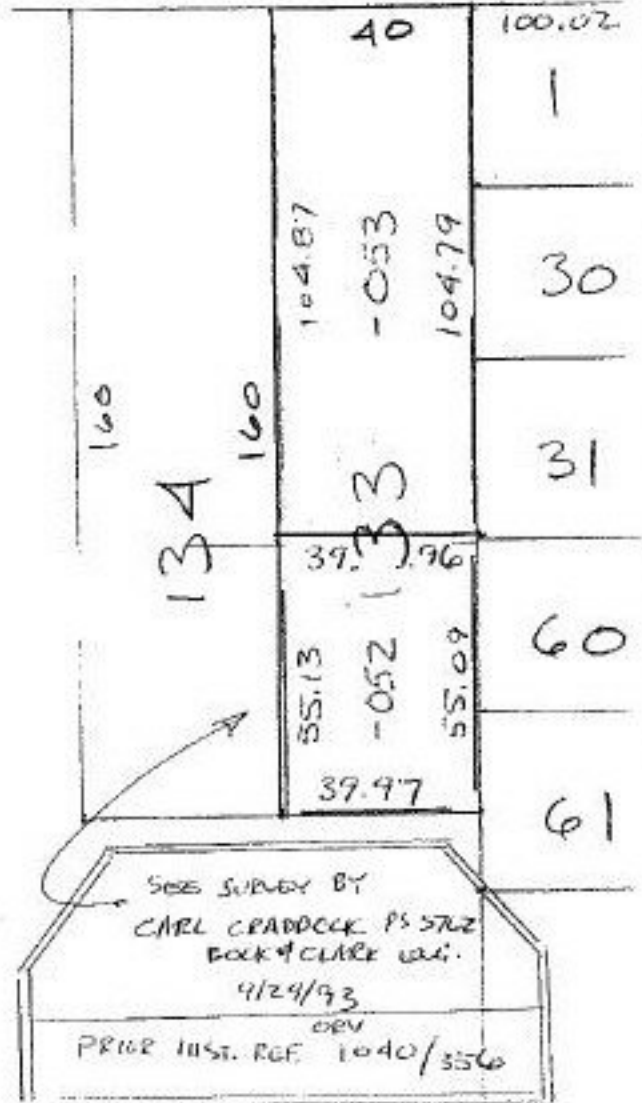
#22216-D

SEE 3-00-041



DETAIL N.T.S.

IVANHOE AVE.



#22216-D

DEED CHECK:  
 NEEDED TO CLEAR  
 UP OWNER PROBLEM  
 WITH EXCEPTION ON  
 PRIOR DESCRIPTION  
 SEE 21218 RE'95

APPROVED  
 LORAIN CO.  
 MAP DEPT.  
 DATE 6-19-97  
 FILE 3-00-040  
 T. McMain  
 22216-D

SEE SURVEY BY  
 CARL CRADDOCK PLS 5722  
 BOOK & CLERK W.G.  
 4/24/93  
 ORV  
 PRIOR INST. REF. 1040/356