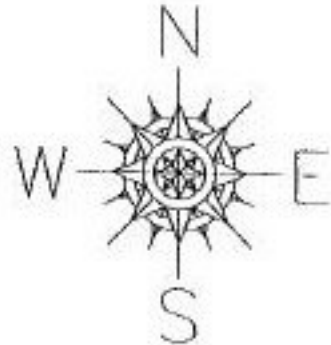


ADD TO DUPLICATE

PARCEL: 01-00-002-102-063

STARTING POINT: SW COR. SUBLT 27 ALONG EDGEWATER BLVD

NO. 22210-X

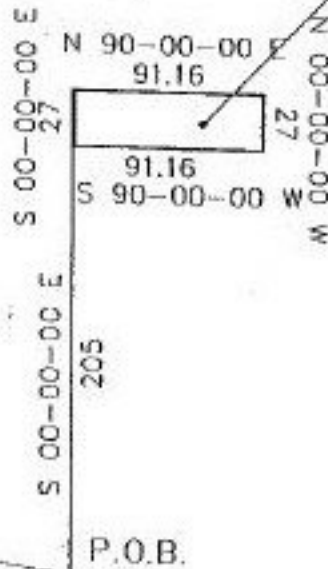


640
Block NO.

LAKE

ADD TO DUP
-063
0.06 A.
(SUBMERGED LAND LEASE)

ERIE



EDGEWATER DRIVE

ASSIGN

BLOCK

640

1/4/2000

SPLITS/DEEDS PROCESSED

LORAIN COUNTY TAX MAP DEPARTMENT
226 MIDDLE AVE. ELYRIA, OHIO

SURVEYED BY: RICHARD R. ZIEGMAN

CLOSURE: 0.00 - 10,000

MAP PAGE(S): 01-00-002 B

APPROVED BY: REB DATE: 06/23/97

SCALE: 1" = 100'