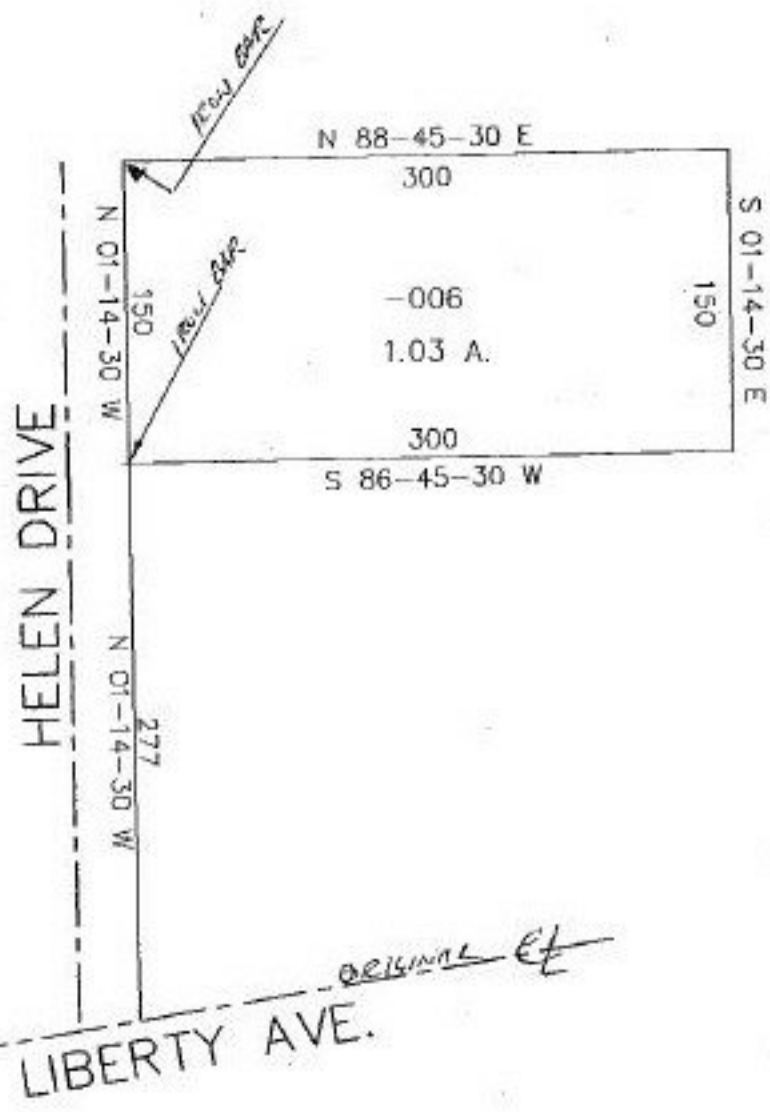


#22205  
NO. 22205

PARENT PARCEL: 01-00-005-103-005

CHILD PARCEL: 01-00-005-103-006, 007

STARTING POINT: e. line of Helen Drive, N 1° 14' 30" W 277.00 ft. from its intersection with cl. of Liberty Ave.



—005  
—10.70 A.—  
—007  
9.67 A.

*ORIGINAL ET*



**SPLITS/DEEDS PROCESSED**  
 LORAIN COUNTY TAX MAP DEPARTMENT  
 226 MIDDLE AVE. ELYRIA, OHIO

SURVEYED BY: Earl H. Hunter  
 CLOSURE: 0.00 : 10,000  
 MAP PAGE(S): 01-00-005-B  
 APPROVED BY: kac DATE: 6-10-97  
 SCALE: 1" = 100'