



783/601
PCL.2
6.50 A.

1051-38

783/601
PCL.4
11.00 A

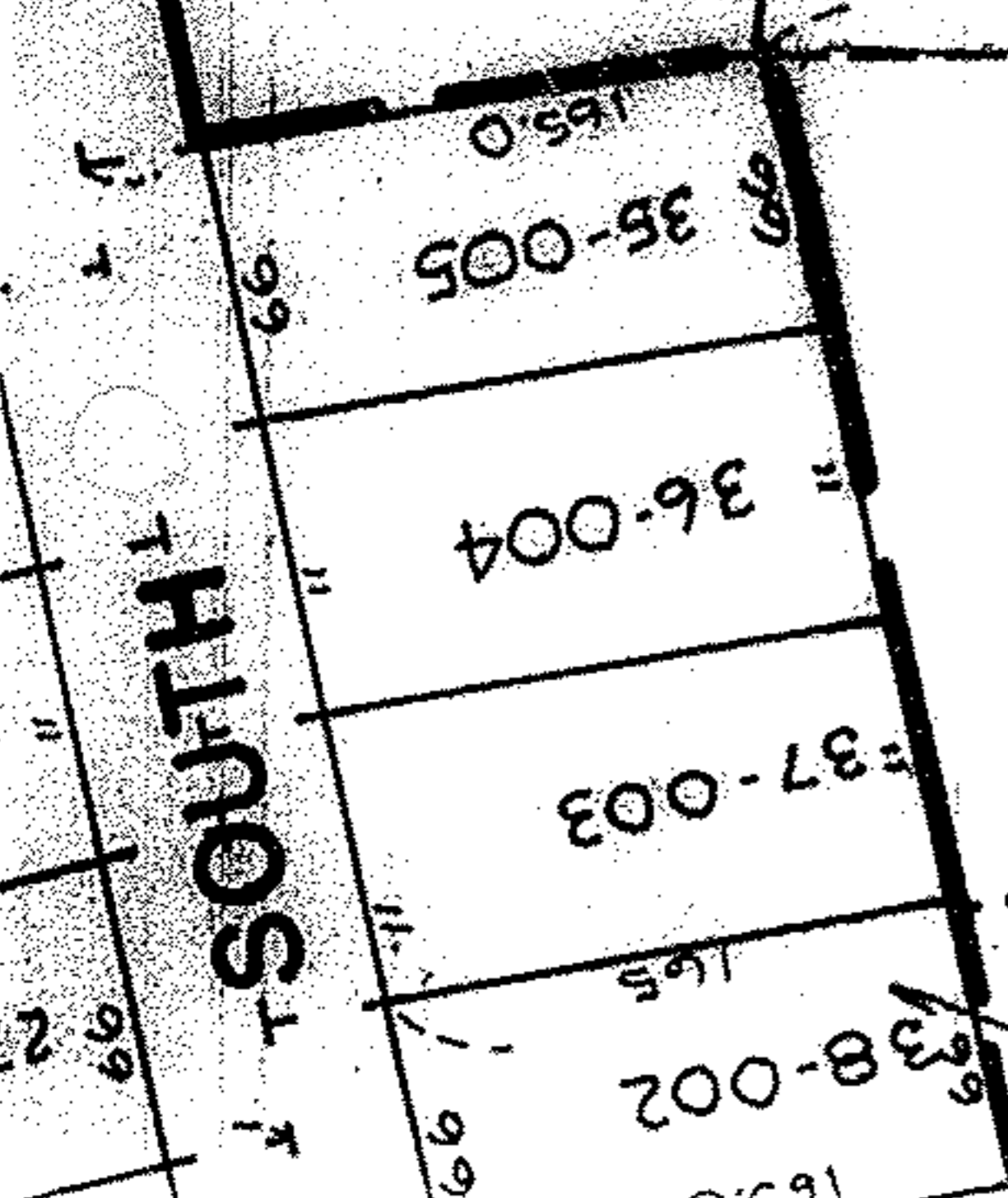
-015
17.50A

#22205-D

**NO CHANGES
OF TAX MAP**

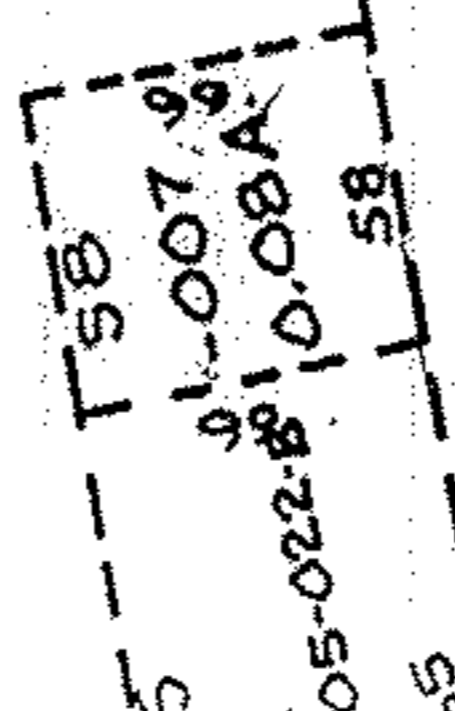
APPROVED LORAIN CO. MAP DEPT
DATE 6-25-97
'20-05-016A PAGE
BY R. BELL
22205-D

SOUTH



0.40 A.
115.50

-006
1.42 A.



-008
2.00 A.

"UPDATE LEGAL"

305.48

430.98

304.92