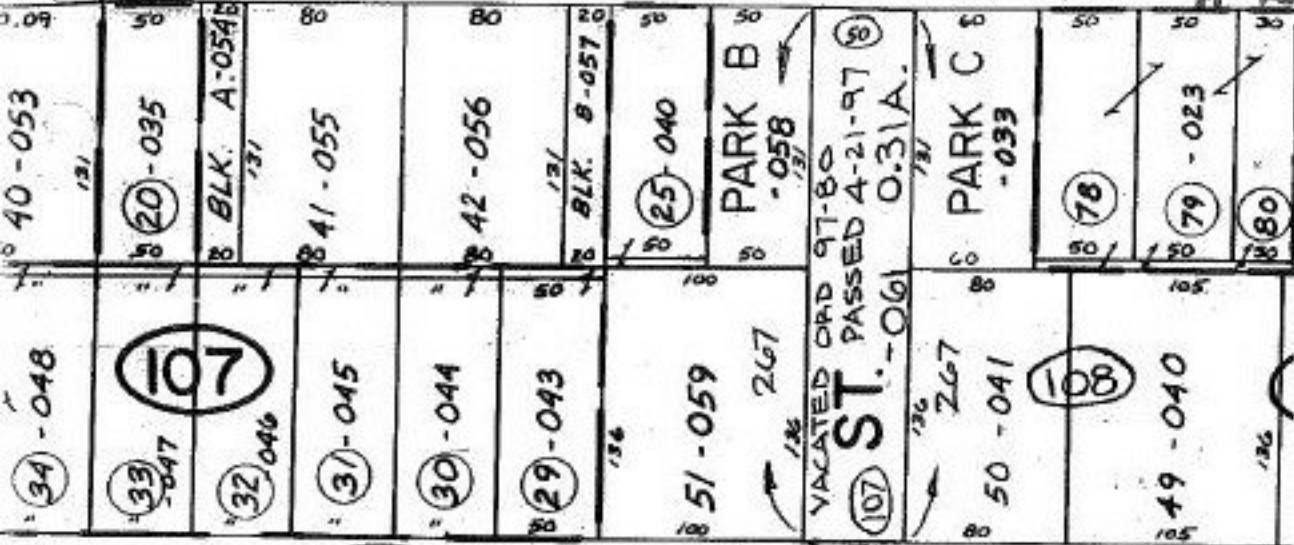


FULLER

ST

#22193-V



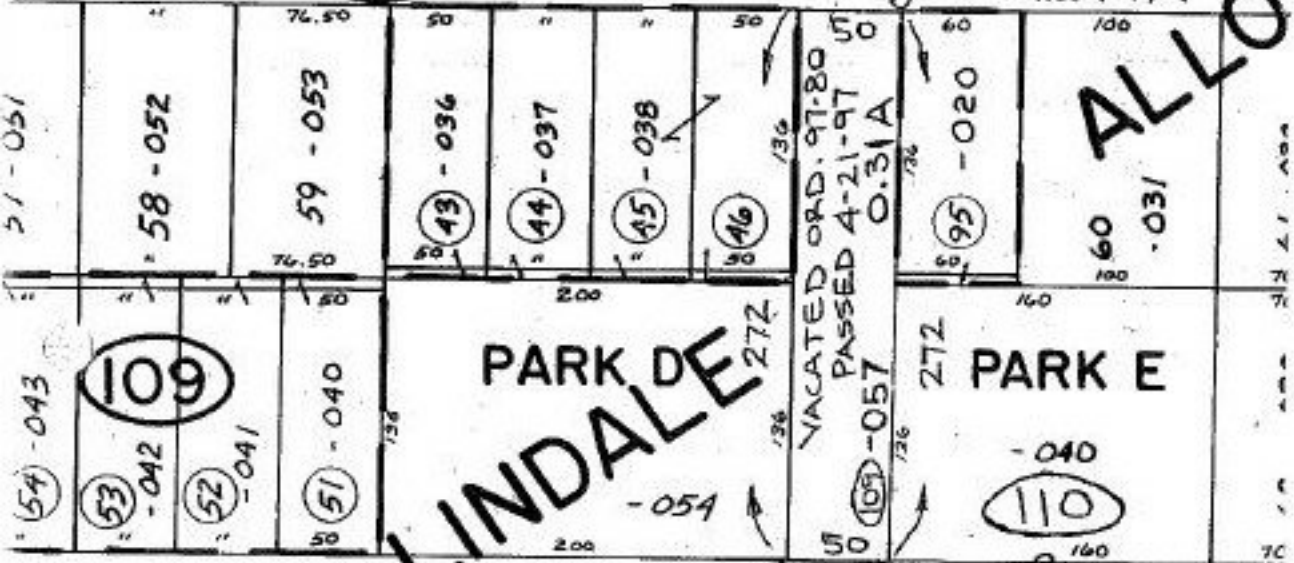
STATE

900

-014 13.40 A

Pt. -016
Pt. 12.49A

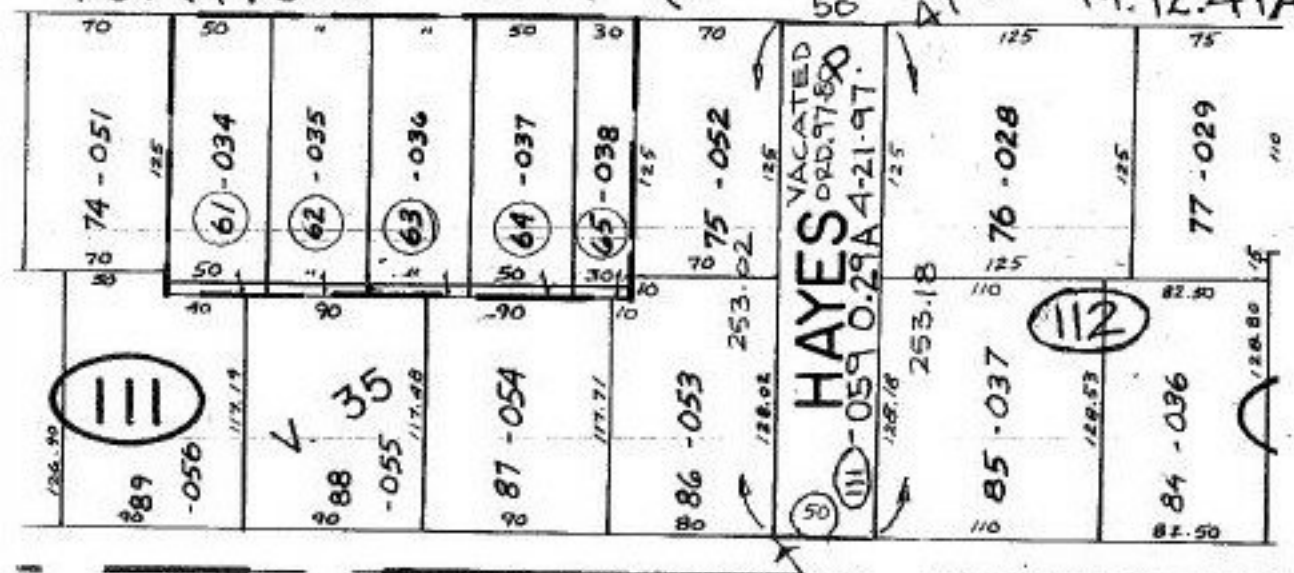
ALLO ST.



WAYNE

ST. P.O.B.

47 & 48 Pt. -016
Pt. 12.49A.



WOOD

ST.

P.O.B.

#22193-V

APPROVED
LORAIN CO.
MAP DEPT

DATE 6-10-97

PAGE 10-00-004E

BY R. Bell

#22193-V

