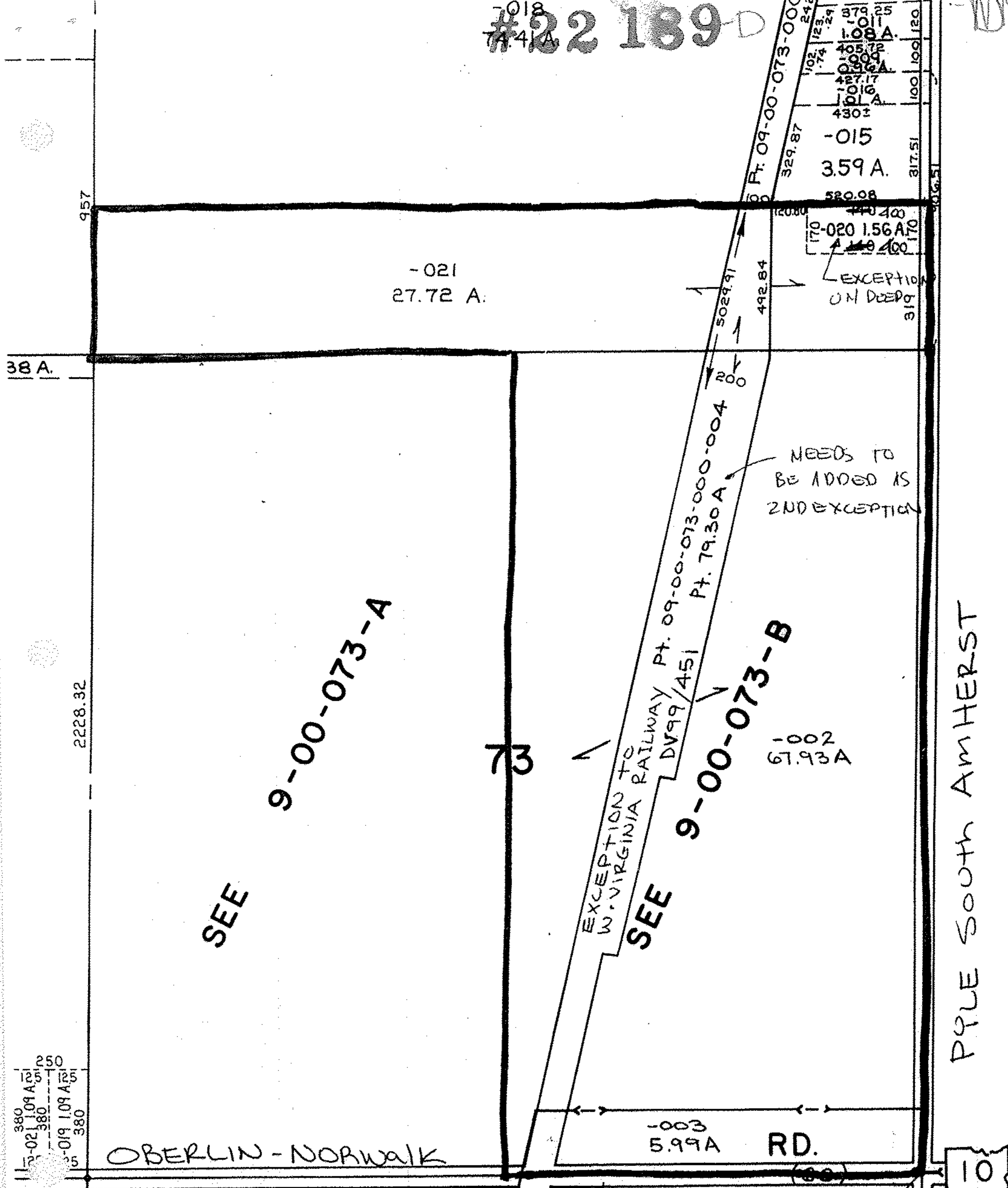


379.25	100	109.120
1.08 A.		
405.72		
0.909		
0.96 A.		
427.17		
1.016		
1.01 A.		
430.2		
-015		
3.59 A.		
520.08		
329.87		
102.12		
1.74		
2.29		



38 A.

957

2228.32

380  
1.09 A. 250  
380  
1.09 A. 250  
380

OBERLIN-NORWALK

-021  
27.72 A.

170  
-020 1.56 A. 170  
EXCEPTION ON DEED  
317.51

NEEDS TO BE ADDED AS 2ND EXCEPTION

SEE 9-00-073-A

EXCEPTION TO W. VIRGINIA RAILWAY  
PT. 09-00-073-000-004  
PT. 79.30A  
SEE 9-00-073-B

-002  
67.93A

-003  
5.99A RD.

PPLE SOUTH AMHERST

UPDATE LEGAL NEXT TRANSFER

NO CHANGES OF TAX MAP

9-00-083-A

83

9-00-083-B

APPROVED
LORAIN CO.
MAP DEPT.
DATE 5-21-97
PAGE 9-E
BY R. BELL
VOID AFTER # 22189-D