

#22188-X

PARENT PARCEL: 12-00-084-102-021, 039

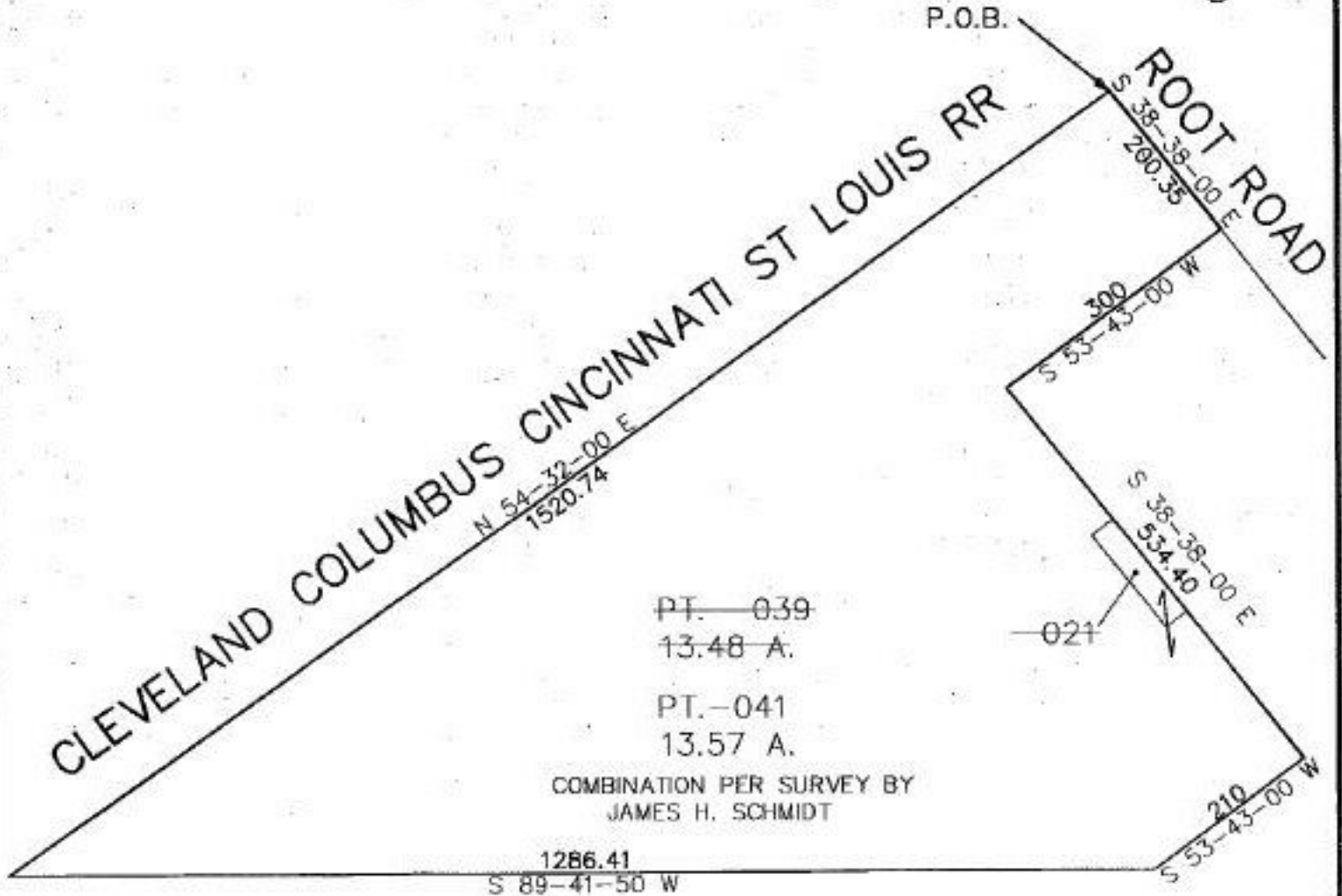
CHILD PARCEL: 12-00-084-102-041

STARTING POINT: SW line of Root Rd. & SE line of Cleveland, Columbus & Cincinnati St. Louis Railroad

NO. 22188-X



P.O.B.



PT. 039
13.48 A.

PT. 041
13.57 A.

COMBINATION PER SURVEY BY
JAMES H. SCHMIDT

1286.41
S 89-41-50 W

SURVEYED BY: James H. Schmidt

CLOSURE: 0.67 per 10,000

MAP PAGE(S): 12-00-084-B

APPROVED BY: kac/REB DATE: 5/21/97

SCALE: 1"=200



SPLITS/DEEDS PROCESSED

LORAIN COUNTY TAX MAP DEPARTMENT
226 MIDDLE AVE. ELYRIA, OHIO