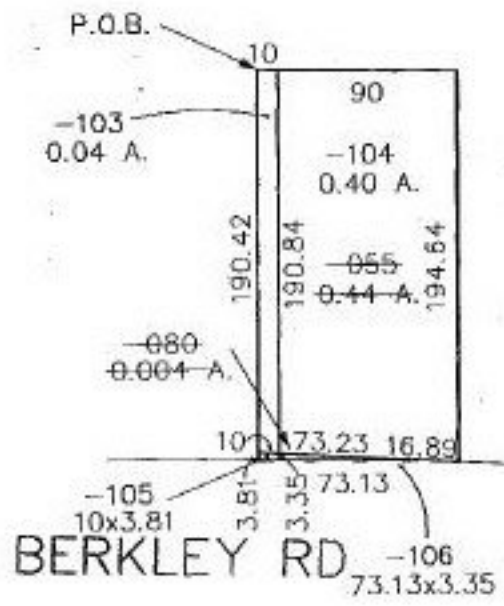


#22186

NO. 22186

PARENT PARCEL: 01-00-001-108-055, 080
CHILD PARCEL: 01-00-001-108-103 THRU 106
STARTING POINT: N 89° 02' W 200 ft. along the s. line & its w. prolongation of S/L 1
in Edison Village Estates Sub. 1 (V.35 P.72, 73)



SPLITS/DEEDS PROCESSED
LORAIN COUNTY TAX MAP DEPARTMENT
226 MIDDLE AVE. ELYRIA, OHIO

SURVEYED BY: Vincent C. McGervey
CLOSURE: 0.04 : 10,000
MAP PAGE(S): 01-00-001-B
APPROVED BY: koc/REB. DATE: 5/27/97
SCALE: 1" = 100'