

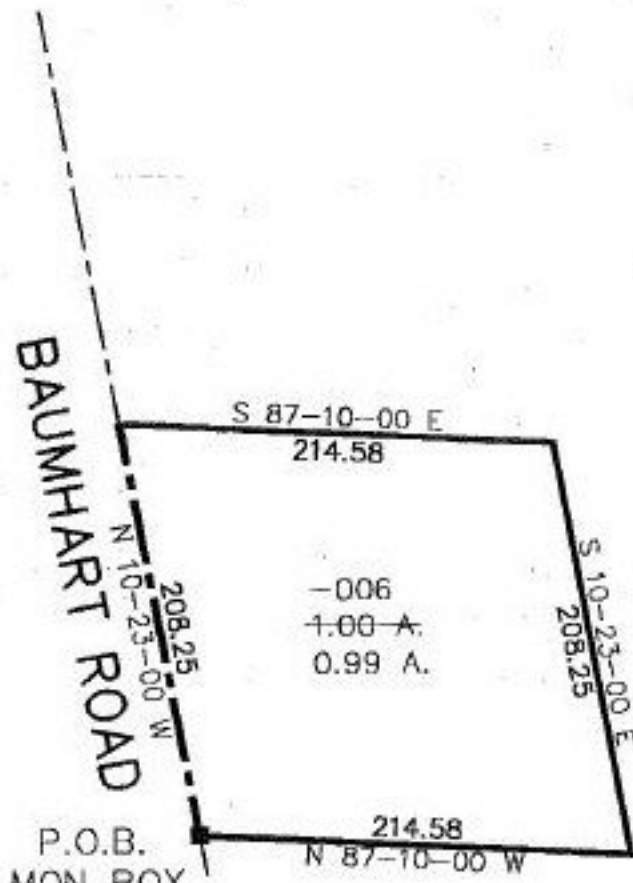
#22185-D

PARENT PARCEL: 01-00-074-000-006

CHILD PARCEL: N/A

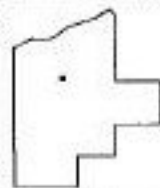
STARTING POINT: c.l. of Baumhart Rd. & s. line of Brownhelm Township

NO. 22185-D



ACREAGE CORRECTION PER  
DESCRIPTION IN OR 747  
P. 267 PCL. 1

PRIOR 0250 ORV 747, P267



**SPLITS/DEEDS PROCESSED**  
LORAIN COUNTY TAX MAP DEPARTMENT  
226 MIDDLE AVE. ELYRIA, OHIO

Surveyed By: CHARLES WARD  
CLOSURE: 0.02 : 10.000  
MAP PAGE(S): 01-00-074B  
APPROVED BY: koc/REB DATE: 5/19/97  
SCALE: 1" = 100