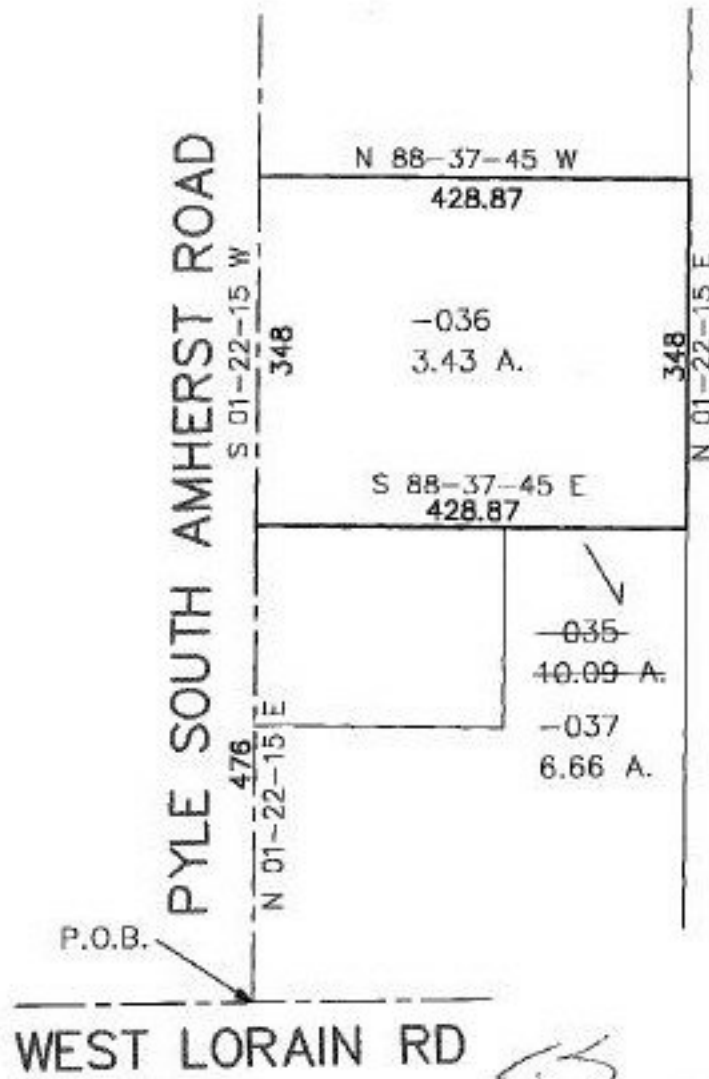


PARENT PARCEL: 09-00-074-101-035

CHILD PARCEL: 09-00-074-101-036 & 037

STARTING POINT: cL of Pyle South Amherst Rd. & cL of State Route 511

NO. 22182



TS  
11-3-97  
EFFECTIVE 9/30/97  
RC



**SPLITS/DEEDS PROCESSED**

LORAIN COUNTY TAX MAP DEPARTMENT  
226 MIDDLE AVE. ELYRIA, OHIO

SURVEYED BY: Rodger G. Simon

CLOSURE: 0.00 : 10.000

MAP PAGE(S): 9-00-074A

APPROVED BY: kac/REB. DATE: 5/15/97

SCALE: 1"=200'