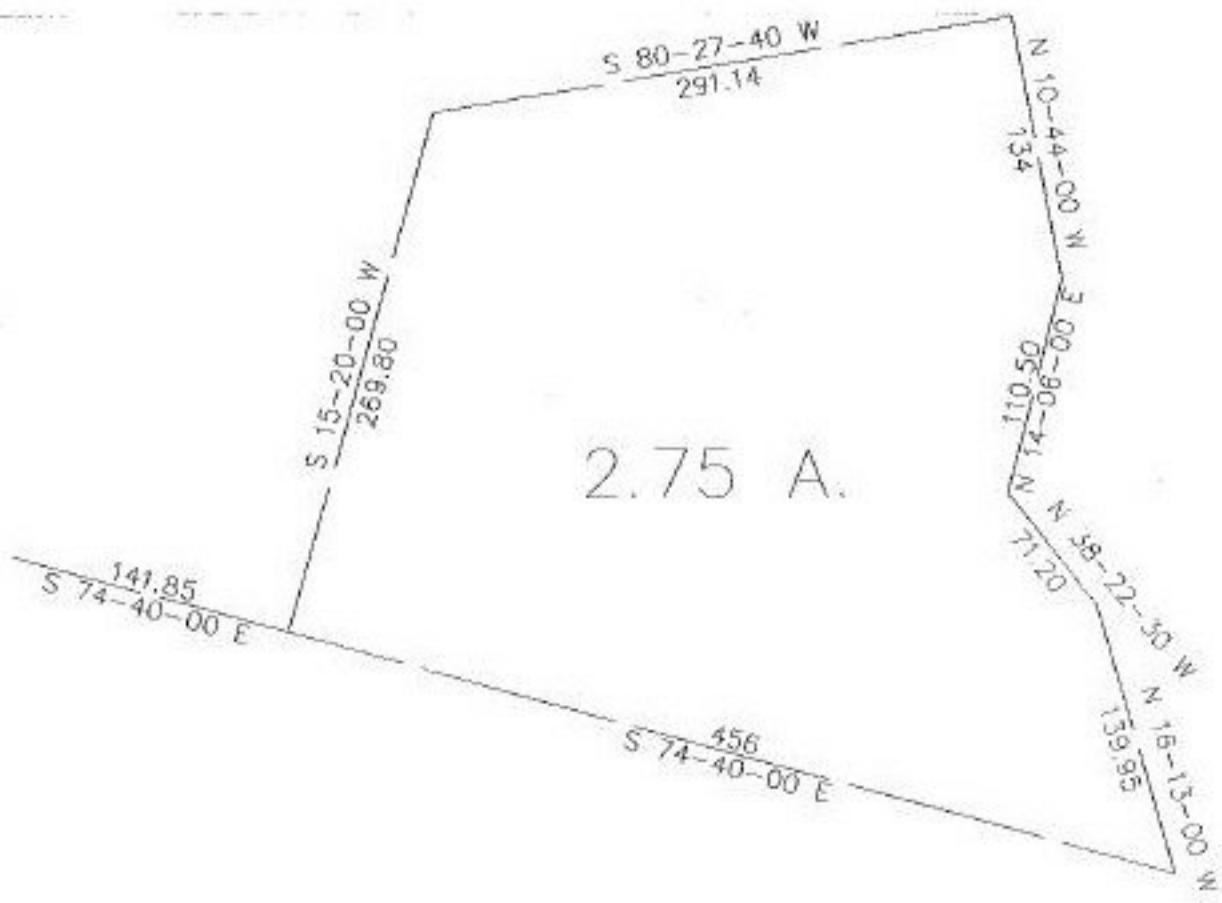


ADJACENT PARCEL: XX-XX-XXX-XXX-XXX
OLD PARCEL: XX-XX-XXX-XXX-XXX
STARTING POINT: XXXXXX

NO. XXXXX-X

22175-D



SPLITS/DEEDS PROCESSED
LORAIN COUNTY TAX MAP DEPARTMENT
226 MIDDLE AVE. ELYRIA, OHIO

SURVEYED BY: XXXXXXXXXXXX
CLOSURE: XXXXXX
MAP PAGE(S): XX-XX-XXX
APPROVED BY: XXX DATE: XX/XX/XX
SCALE: 1" = 100'