

#22174-D

PARENT PARCEL: 02-01-004-101-011, 072

CHILD PARCEL: N/A

STARTING POINT: INT SLY LINE E. ERIE AVE & ELY LINE BROADWAY AVE

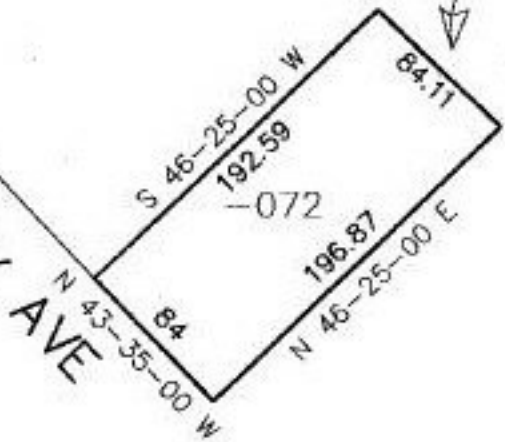
NO. 22174-D



NO CHANGES
OF TAXMAP

E. ERIE AVE
P.O.B.

N 43-35-00 W 279
BROADWAY AVE



Radius: 2831.93
Chord: 84.11

SEE SHEET 2 OF 2
FOR PPN 02-01-004-101-011



SPLITS/DEEDS PROCESSED
LORAIN COUNTY TAX MAP DEPARTMENT
226 MIDDLE AVE. ELYRIA, OHIO

SURVEYED BY: City of Lorain, Dept. of Engineering
CLOSURE: 0.11 per 10,000
MAP PAGE(S): 02-01-004-A
APPROVED BY: kac/RFB DATE: 5/13/97
SCALE: 1" = 100'