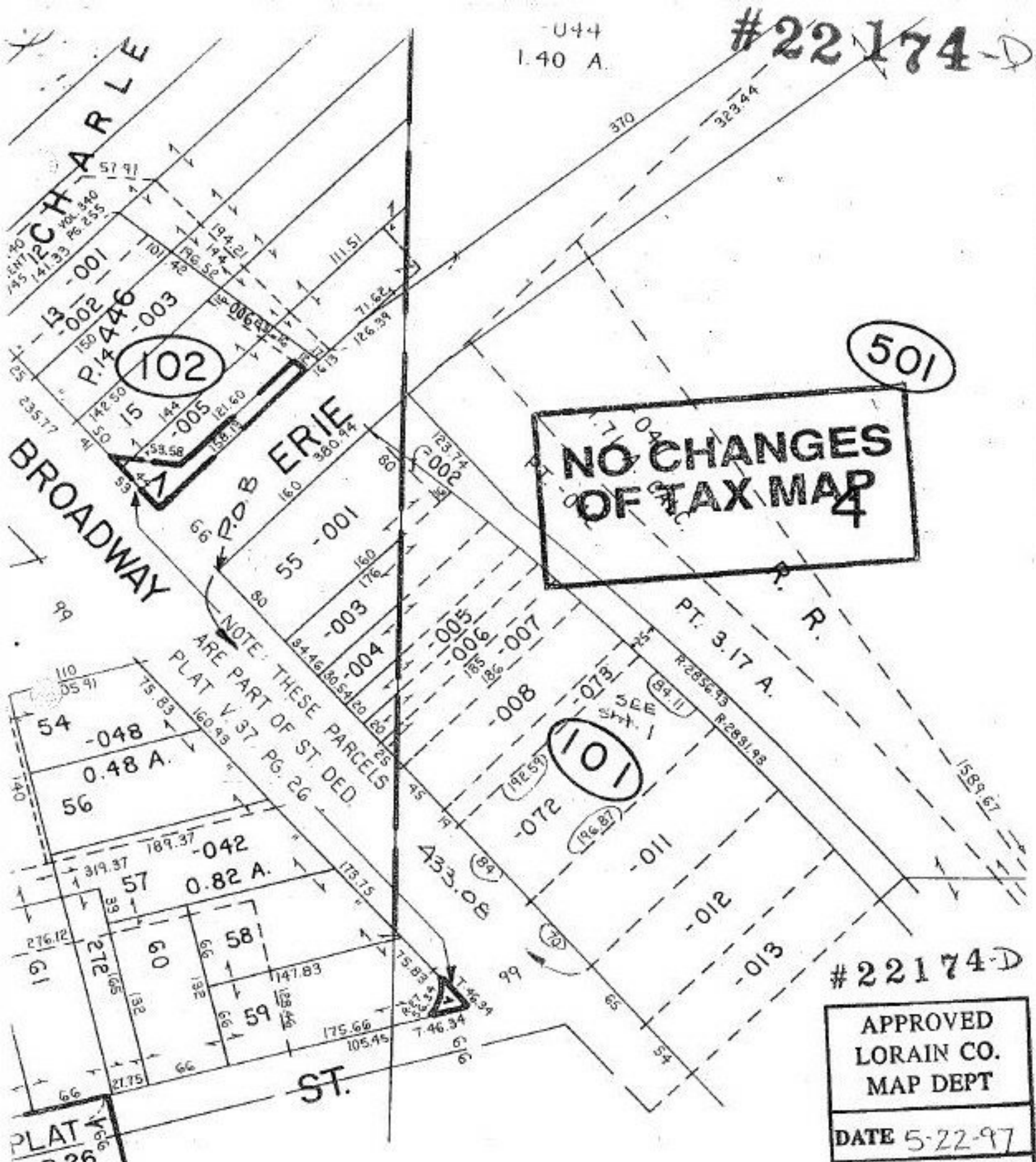


U44  
1.40 A.

#22174-D



**NO CHANGES  
OF TAX MAP  
4**

102

501

101

NOTE: THESE PARCELS  
ARE PART OF ST. DED.  
PLAT V. 37 PG. 26

#22174-D

APPROVED LORAIN CO. MAP DEPT
DATE 5-22-97
PAGE 02-01-004A
BY R. BELL
# 22.174-D

SEE 2-01-004-B

70F7