

PARENT PARCEL: 06-25-021-104-007

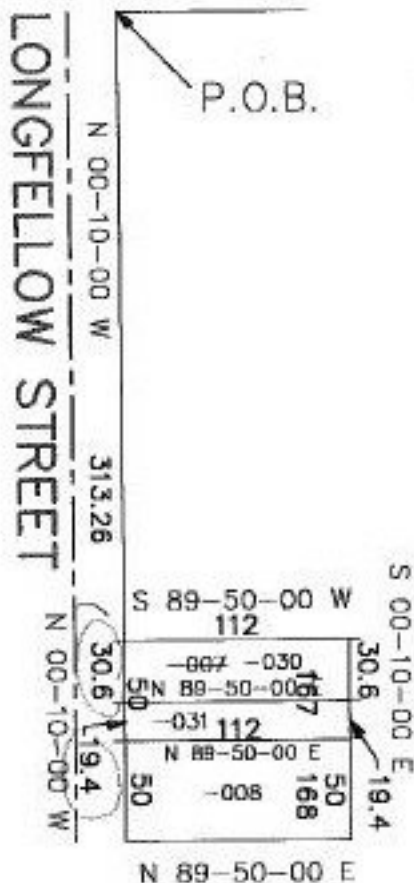
CHILD PARCEL: 0625-021-104-030, 031

STARTING POINT: e. line of Longfellow St. & s. line of Sycamore St.

NO. 22171



SYCAMORE STREET



EFFECTIVE 6/20/97
[Signature]



9-24-98

SPLITS/DEEDS PROCESSED

LORAIN COUNTY TAX MAP DEPARTMENT
226 MIDDLE AVE. ELYRIA, OHIO

SURVEYED BY: Rodger G. Simon
 CLOSURE: 0.00 per 10,000
 MAP PAGE(S): 6-88
 APPROVED BY: kac/REB DATE: 5-13-97
 SCALE: 1" = 100'

NEAR CRD 11/9/98