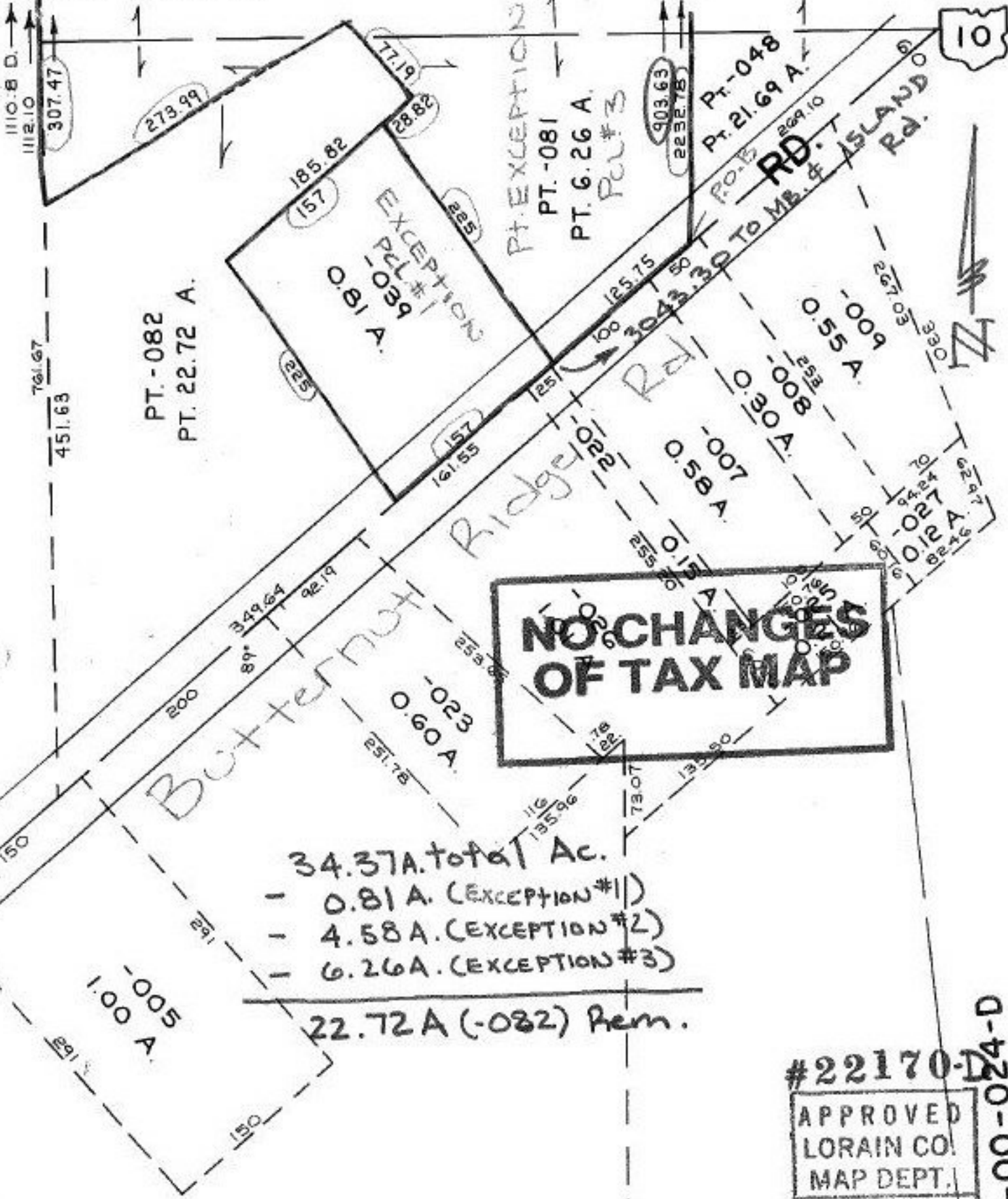


7-00-024-A



PT.-082
PT. 22.72 A.

EXCEPTION
PCL # 90-039
0.81 A.

**NO CHANGES
OF TAX MAP**

34.37A. total Ac.

- 0.81 A. (EXCEPTION #1)
- 4.58 A. (EXCEPTION #2)
- 6.26 A. (EXCEPTION #3)

22.72 A (-082) Rem.

#22170-024-D

APPROVED LORAIN CO. MAP DEPT.
DATE 4-29-97
PAGE 7-00-024-A
BY R. Bell
VOID IF # 22170-024-D

7-00-024-D

SEE

Sht. 1 of 4

913.25
1278
840.18