

SEE 7-00-027-C

2674
202.9

Pt - 048

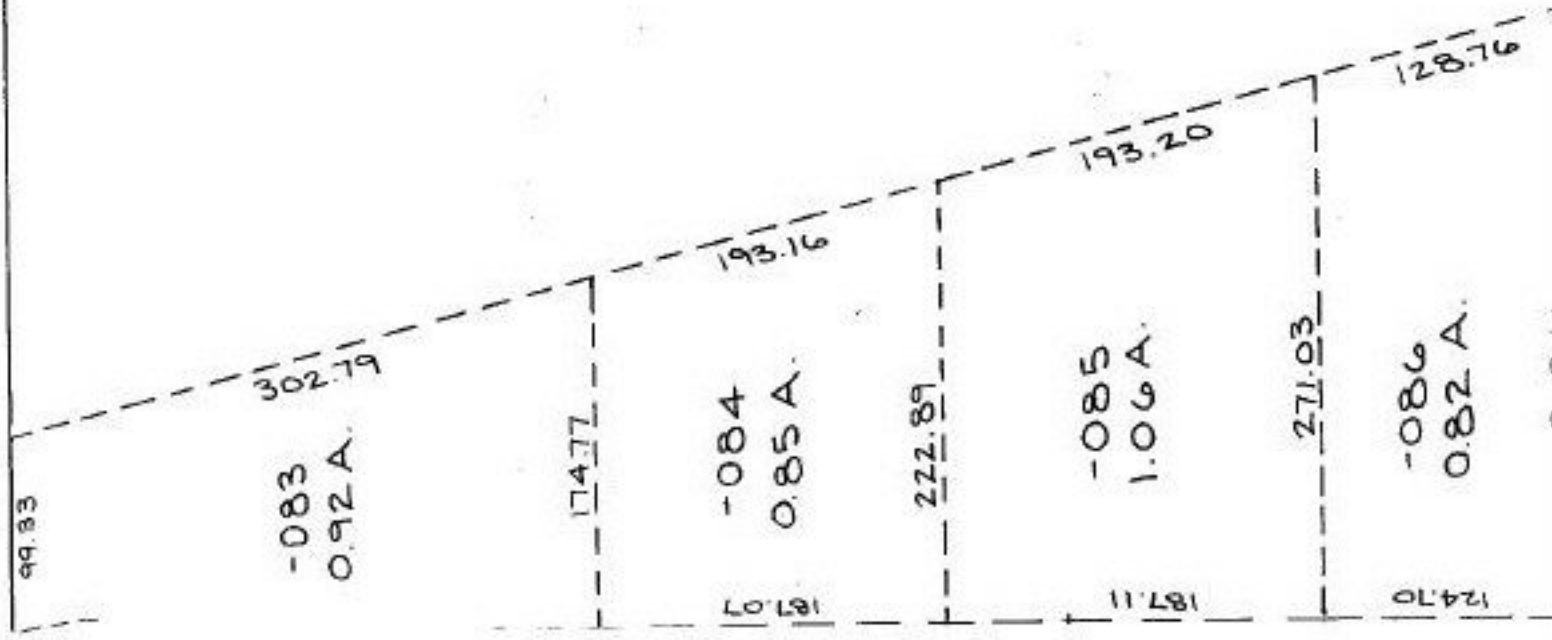


**NO CHANGES
OF TAX MAP**

PT. 22.72 A
PT. 22.72 A

#22170-D

APPROVED
LORAIN CO.
MAP DEPT.
DATE 4-29-97
PAGE 7-00-014A
BY R. Beal
VOID AFTER # 22170-D



4 of 4