

PARENT PARCEL: 03-00-045-102-036

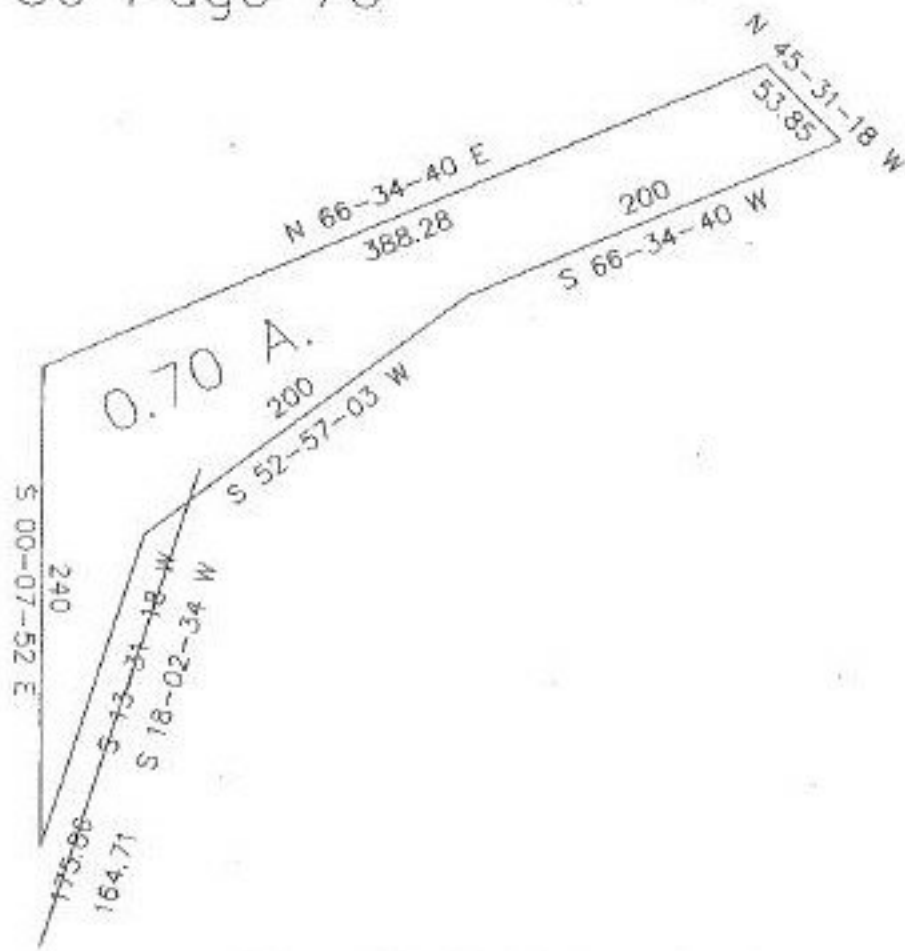
CHILD PARCEL: XX-XX-XXX-XXX-XXX

STARTING POINT: XXXXXX

NO. 22163-A



Certificate of Correction
Upland Glen Subd. No. 2
Vol. 50 Page 70



Also, Black A should be 2.978 A.



SPLITS/DEEDS PROCESSED
LORAIN COUNTY TAX MAP DEPARTMENT
226 MIDDLE AVE. ELYRIA, OHIO

SURVEYED BY: ^{CORRECTED COPY} XXXXXXXXXXXX FILED BY: N.R. HUBER, P.S.
CLOSURE: XXXXXX 1:14106
MAP PAGE(S): 03-00-045
APPROVED BY: kgc DATE: 5/1/97
SCALE: 1" = 100'