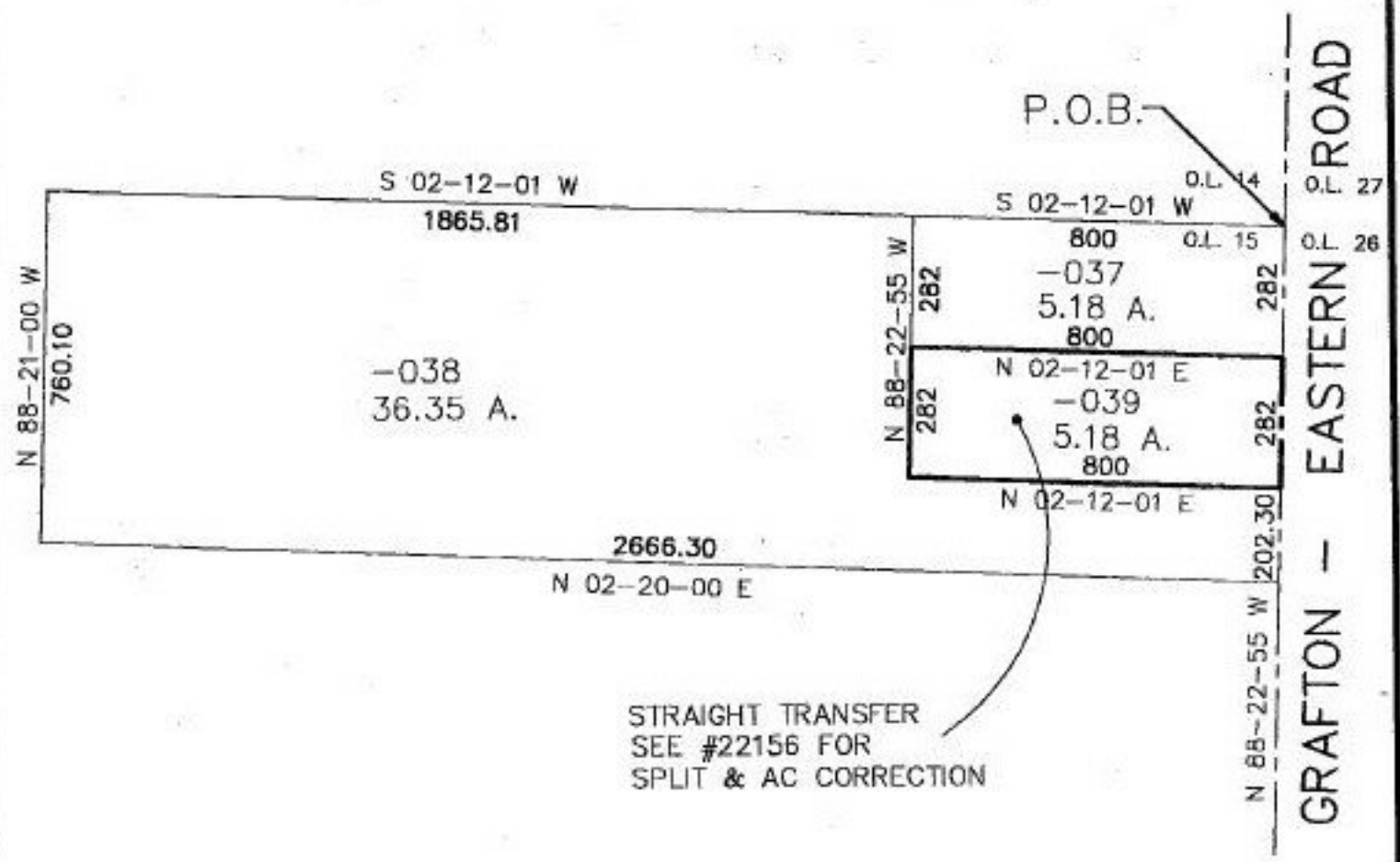
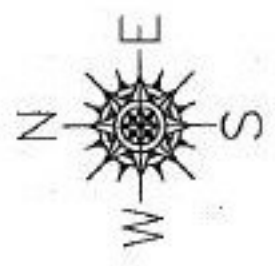


#22150

PARENT PARCEL: 16-00-015-000-039
CHILD PARCEL: STRAIGHT TRANSFER
STARTING POINT: SE CORNER O.L. 15

NO. 22159



STRAIGHT TRANSFER
SEE #22156 FOR
SPLIT & AC CORRECTION



SPLITS/DEEDS PROCESSED
LORAIN COUNTY TAX MAP DEPARTMENT
226 MIDDLE AVE. ELYRIA, OHIO

SURVEYED BY: JAMES B. ROOT
CLOSURE: 0.00 : 10.000
MAP PAGE(S): 16-00-015 B
APPROVED BY: REB DATE: 4/30/97
SCALE: 1" = 400'