

EDISON ST.

ST.

SEE #21963-X  
FOR PCL (103)-027  
DROPPED FROM DUPLICATE

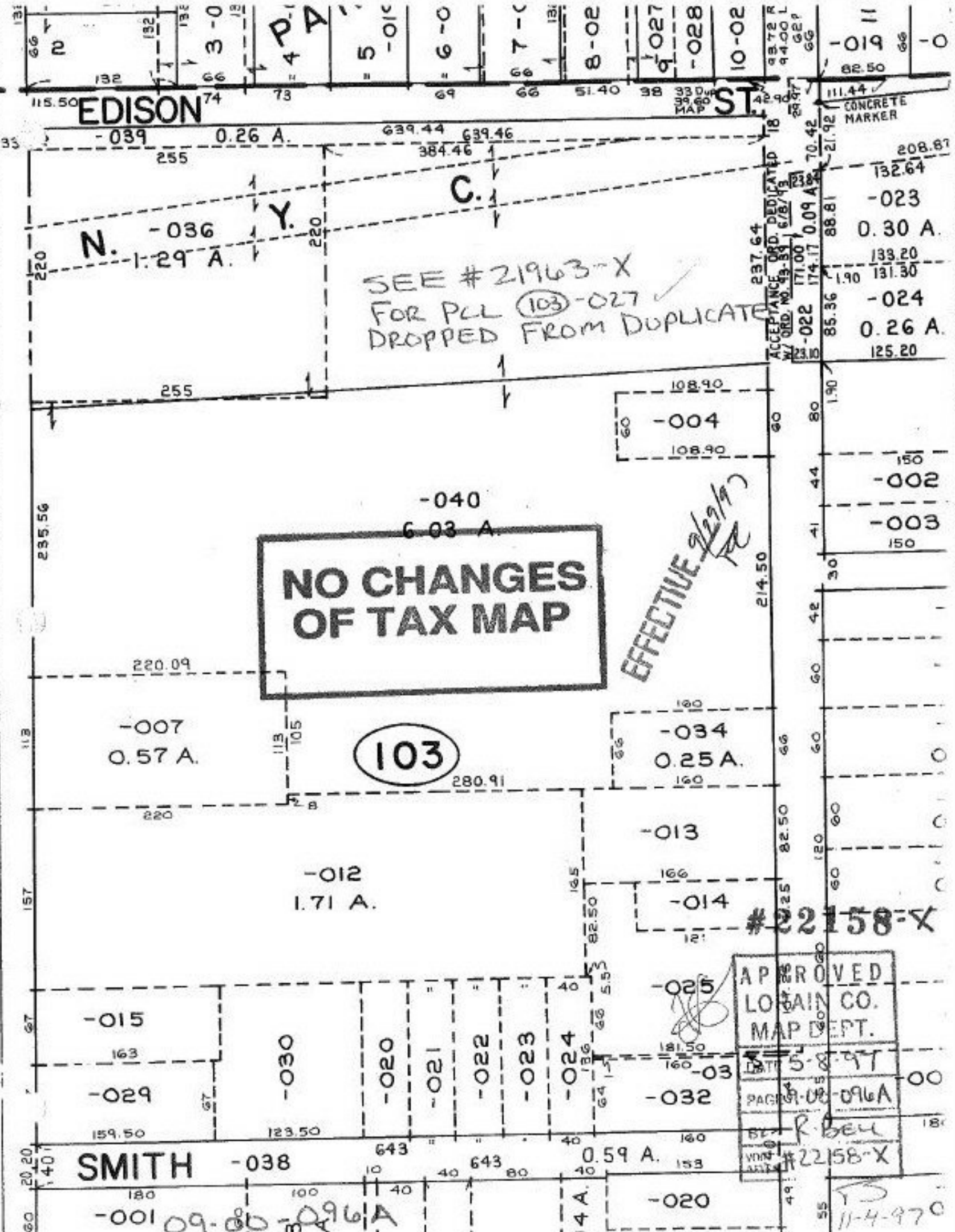
**NO CHANGES  
OF TAX MAP**

EFFECTIVE 9/29/97

(103)

APPROVED  
LORAIN CO.  
MAP DEPT.  
DATE 5-8-97  
PAGE 9-08-096A  
BY R. BELL  
VNS  
#22158-X

SMITH



ACCEPTANCE ORD. DEDICATED  
W/ ORD. NO. 45-84 6/8/93  
237.64  
171.00  
174.17  
0.09 A.  
85.36  
88.81  
70.42  
21.92

CONCRETE MARKER  
11.44  
82.50  
208.87  
132.64  
-023  
0.30 A.  
133.20  
131.30  
-024  
0.26 A.  
125.20

#22158-X

11-4-97