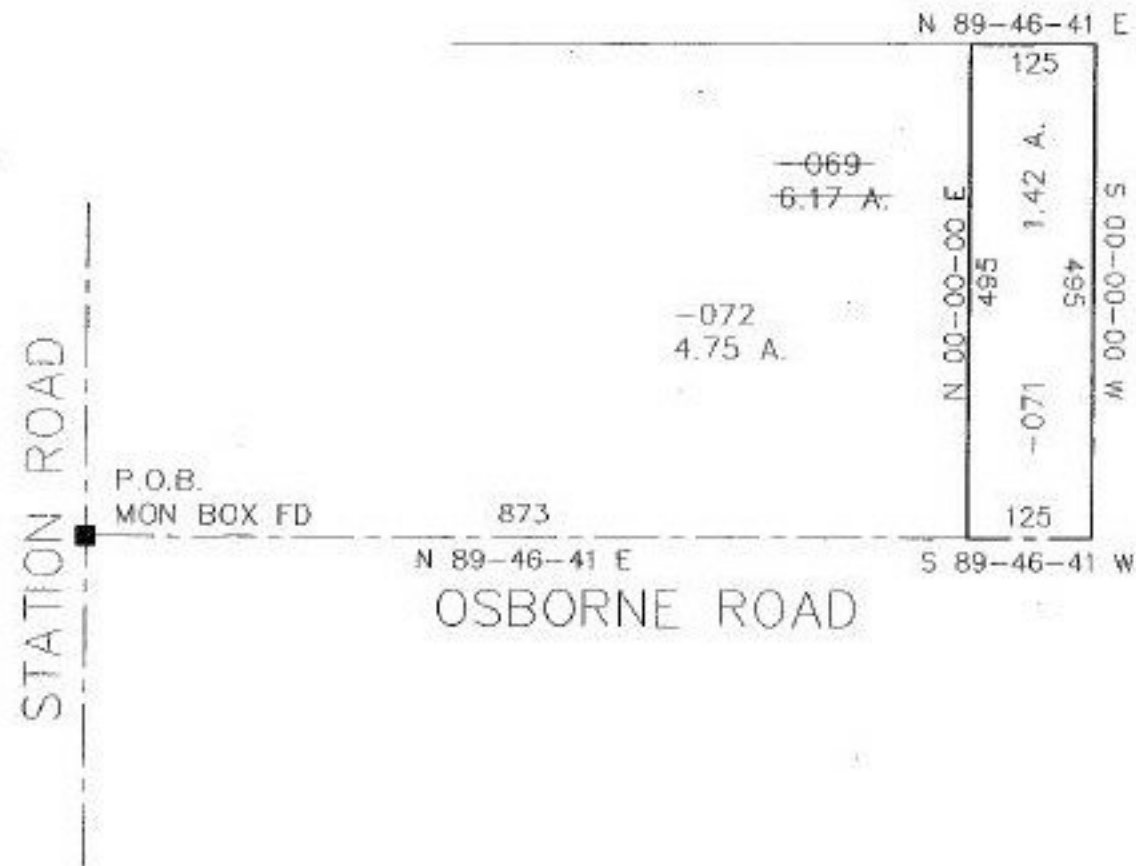


PARENT PARCEL: 12-00-062-000-069

CHILD PARCEL: 12-00-062-000-071 & 072

STARTING POINT: cl Osborne Rd. & cl Station Rd. (w. line O.L. 52)

#22154
NO. 22154



SPLITS/DEEDS PROCESSED
LORAIN COUNTY TAX MAP DEPARTMENT
226 MIDDLE AVE. ELYRIA, OHIO

SURVEYED BY: Ronald D. Robison
CLOSURE: 0.00 per 10.000
MAP PAGE(S): 12-00-062-A
APPROVED BY: kac/REB DATE: 4/22/97
SCALE: 1"=200