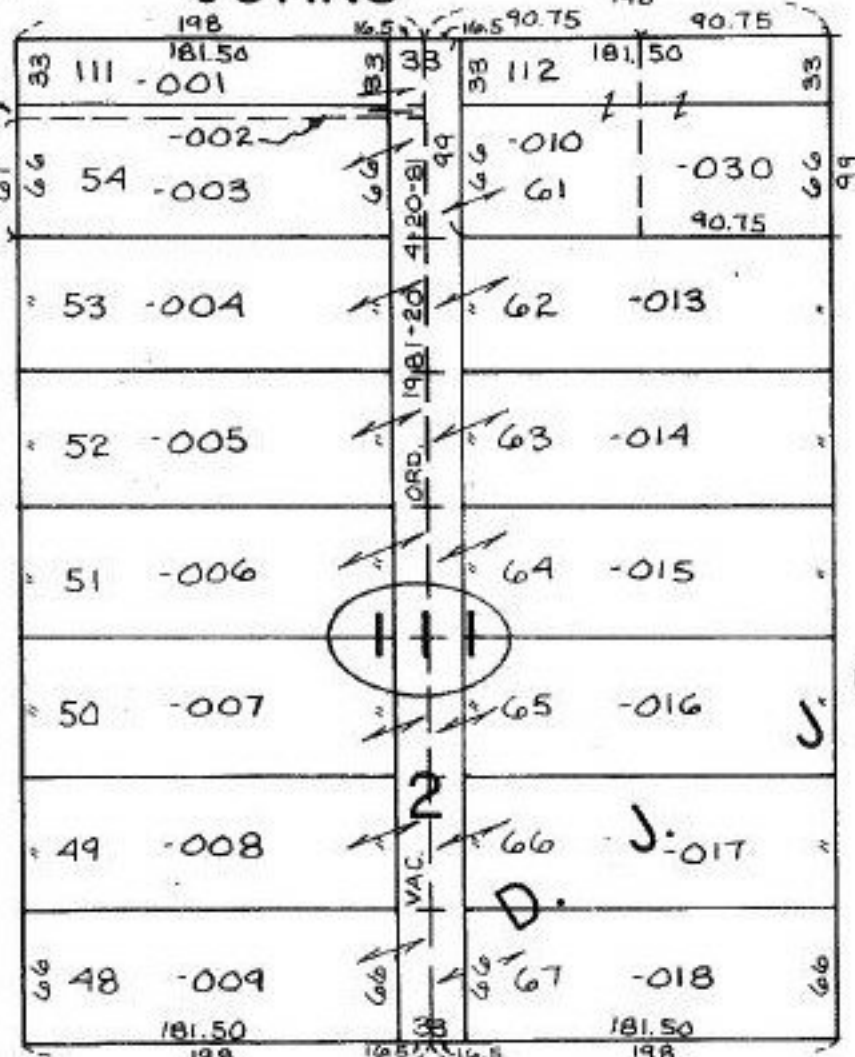


58.60 53.60 53.70 66 33 83 42

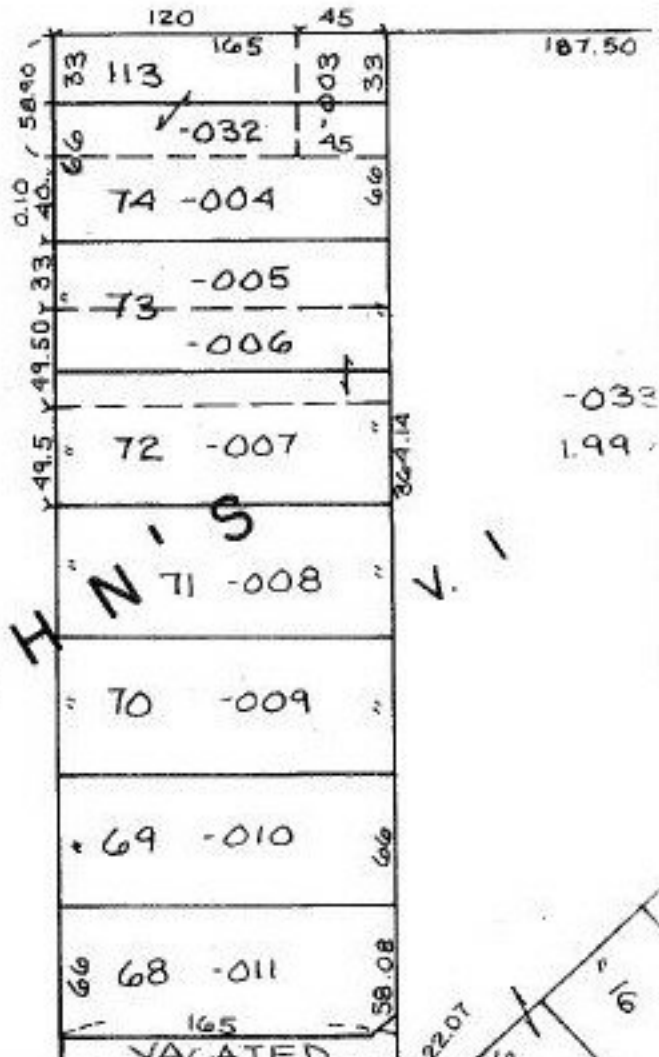
#22143

JOHNS

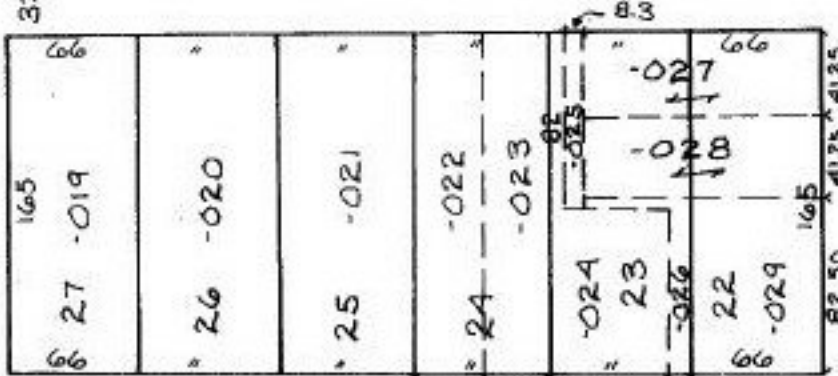
ST.



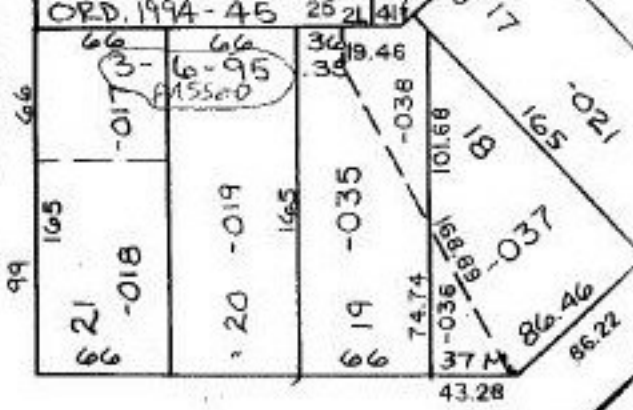
JOHNS



MIDDLE



UNION



HERRICK

#22143-V SE

APPROVED
LORAIN CO.
MAP DEPT.
DATE 4-16-97
PAGE 18-00-028D
BY R. BELL
VOID AFTER # 22143-V