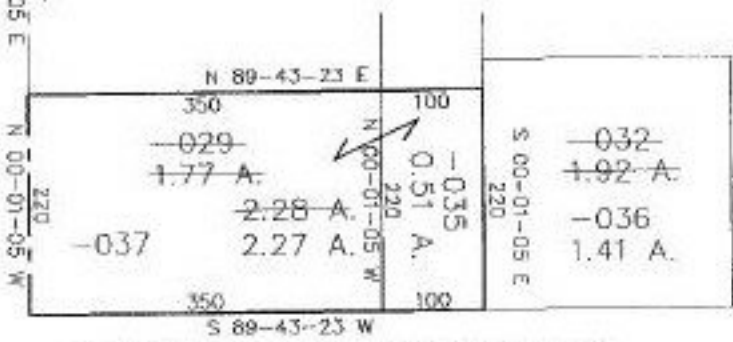
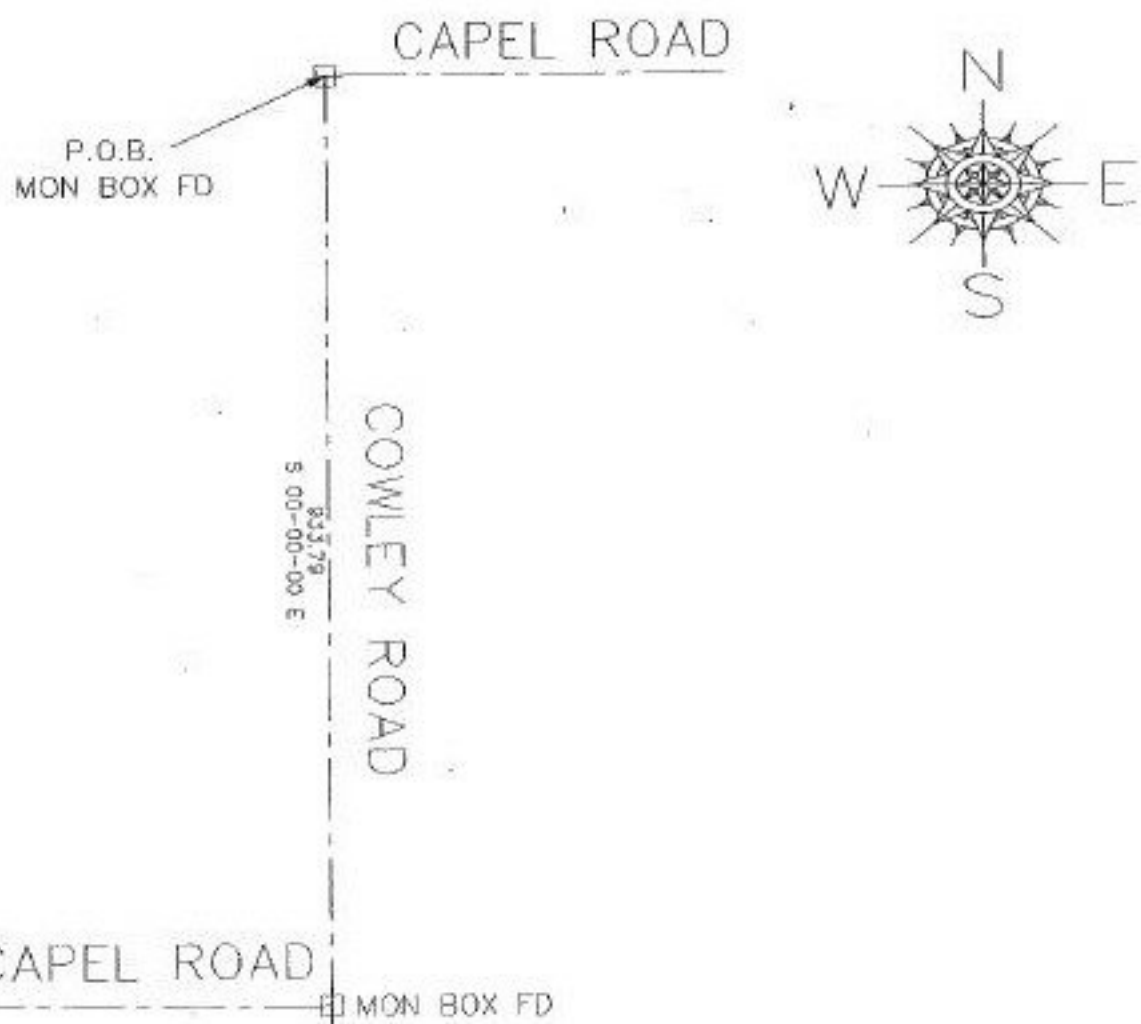


#22137

NO. 22137

PARENT PARCEL: 11-00-003-000-029 & -032
CHILD PARCEL: 11-00-003-000-035, -036, -037
STARTING POINT: NW CORNER OF D.L. 3



COMBINATION & ACREAGE CORRECTION
PER SURVEY BY DAVID L. ELWELL



SPLITS/DEEDS PROCESSED
LORAIN COUNTY TAX MAP DEPARTMENT
226 MIDDLE AVE. ELYRIA, OHIO

SURVEYED BY: DAVID L. ELWELL

CLOSURE: 0.00 PER 10,000

MAP PAGE(S): 11-N

APPROVED BY: KAC/REB DATE: 4-9-97

SCALE: 1" = 200'