

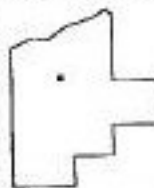
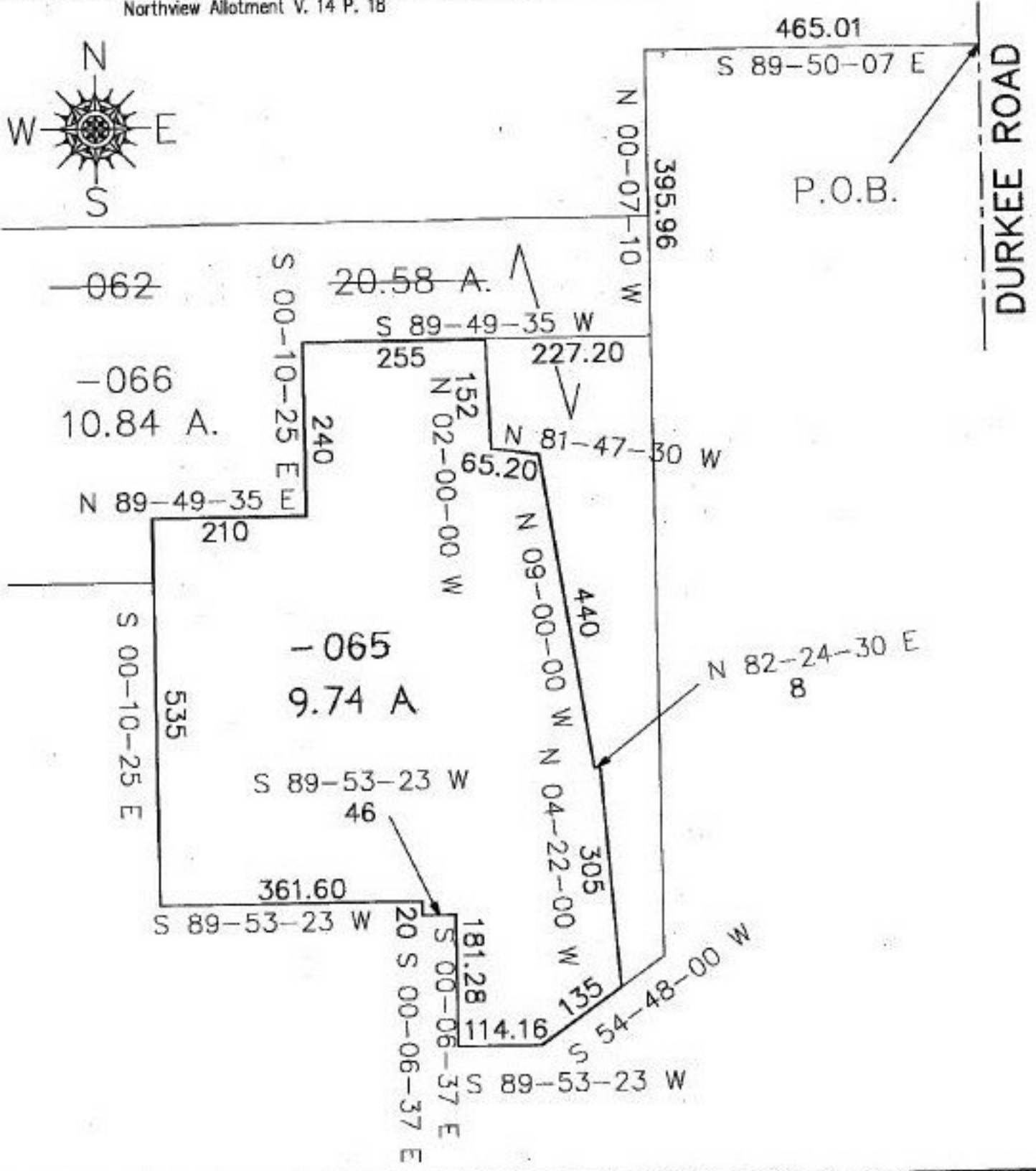
#22133

PARENT PARCEL: 11-00-081-102-062

CHILD PARCEL: 11-00-081-102-065 & 066

STARTING POINT: e. line of O.L. 81 in the cl. of Durkee Rd. & s.e. corner of the Northview Allotment V. 14 P. 18

NO. 22133



SPLITS/DEEDS PROCESSED
LORAIN COUNTY TAX MAP DEPARTMENT
226 MIDDLE AVE. ELYRIA, OHIO

SURVEYED BY: Edward B. Dudley III
CLOSURE: 0.03 : 10.000
MAP PAGE(S): 11-00-081
APPROVED BY: kac/RFB DATE: 5/13/97
SCALE: 1"=200