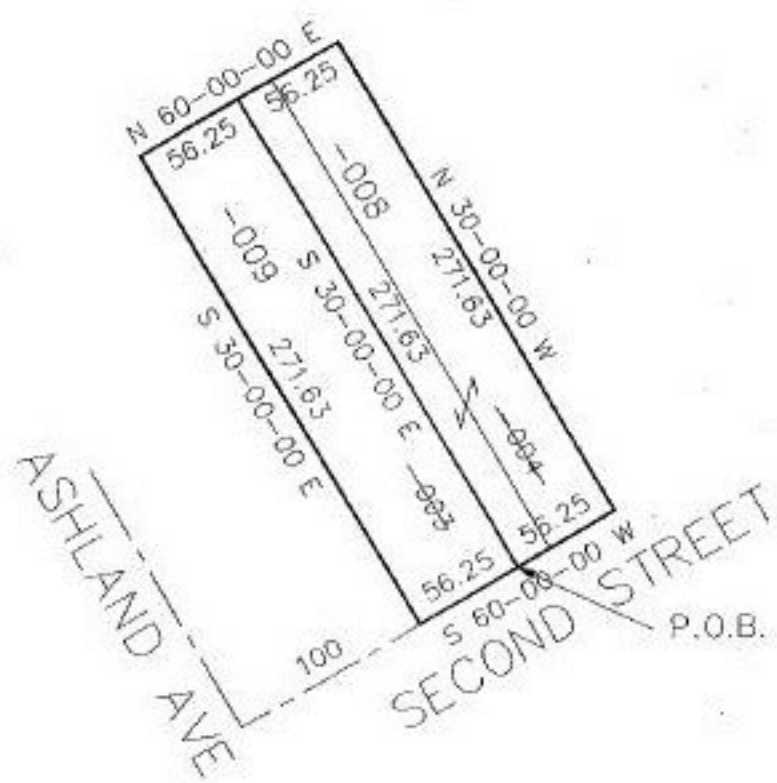


#22126

PARENT PARCEL: 02-02-027-102-003, 004  
CHILD PARCEL: 02-02-027-102-008  
STARTING POINT: 156.25 NLY OF E. line Ashland Ave. & N. line of 2nd Street

NO. 22126



**SPLITS/DEEDS PROCESSED**  
LORAIN COUNTY TAX MAP DEPARTMENT  
226 MIDDLE AVE. ELYRIA, OHIO

SURVEYED BY: Thomas A. Simon  
CLOSURE: 0.00 : 10.000  
MAP PAGE(S): 02-02-026-A  
APPROVED BY: kac DATE: 3-26-97  
SCALE: 1" = 100