

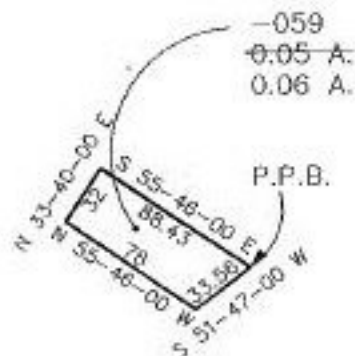
#22113

NO. 22113-A

PARENT PARCEL: 16-00-002-106-059

CHILD PARCEL: N/A

STARTING POINT: 41.76 feet westerly from SE corner of land recorded in DV 630-184



ACREAGE CORRECTION PER
SURVEY BY D.D. ANDRUS &
ASSOCIATES



SPLITS/DEEDS PROCESSED
LORAIN COUNTY TAX MAP DEPARTMENT
228 MIDDLE AVE. ELYRIA, OHIO

SURVEYED BY: D.D. Andrus & Assoc.

CLOSURE: 0.26 per 10,000

MAP PAGE(S): 16-00-001-D

APPROVED BY: kac/RFB DATE: 3-26-97

SCALE: 1" = 100'