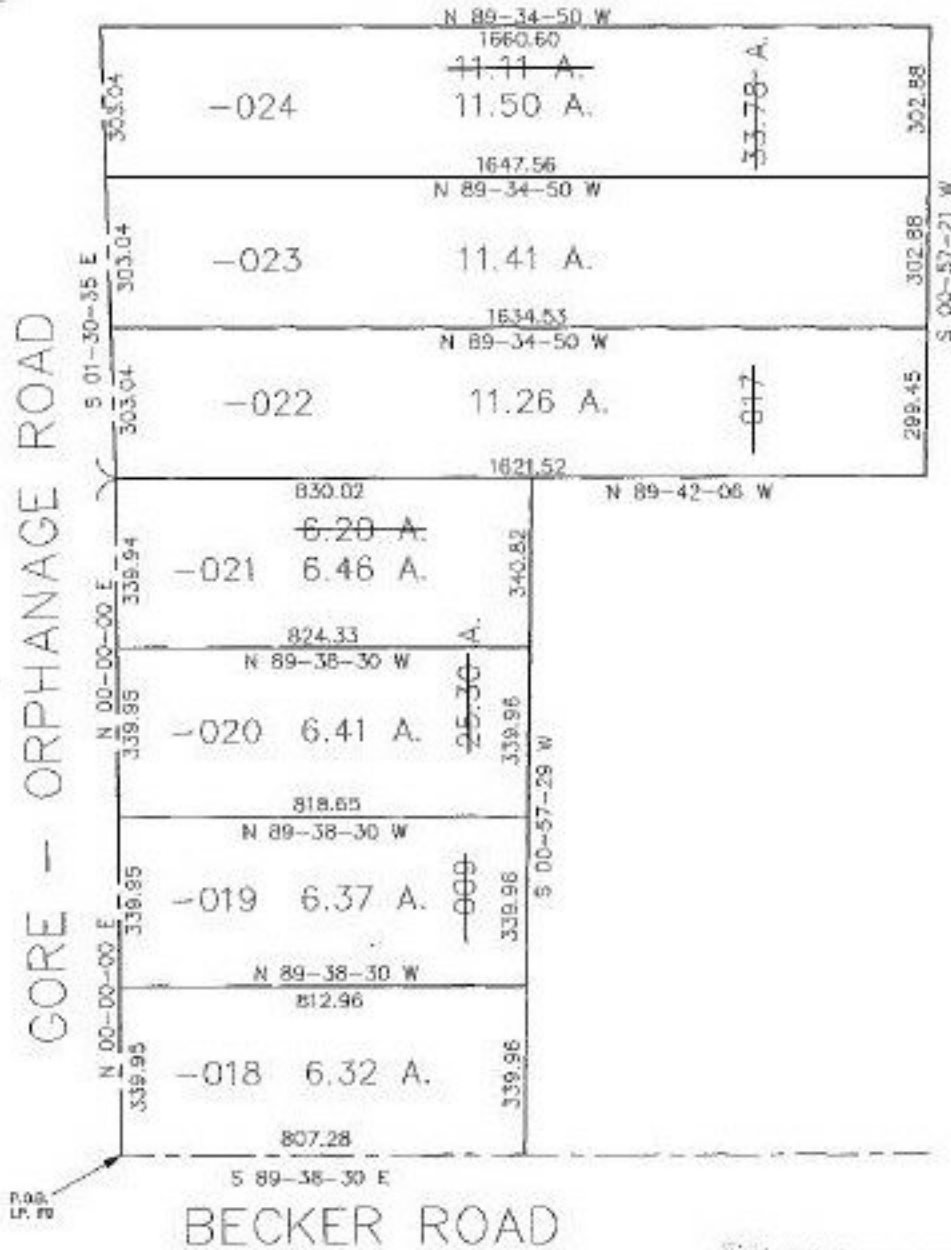


PARENT PARCEL: 08-12-009-000-009, 017
 CHILD PARCEL: 08-12-009-000-018 thru -024
 STARTING POINT: cL Gore Orphanage & cL Becker Rd.

NO. 22112



ACREAGE CORRECTION PER SURVEY
 BY DOUGLAS H. MOSLEY



TS
 2-18-98

EFFECTIVE ACS
 R 10-15-97



SPLITS/DEEDS PROCESSED
 LORAIN COUNTY TAX MAP DEPARTMENT
 226 MIDDLE AVE. ELYRIA, OHIO

SURVEYED BY: Douglas H. Mosley
 CLOSURE: 0.03 per 10,000
 MAP PAGE(S): 8-E
 APPROVED BY: kac/REB DATE: 3-26-97
 SCALE: 1" = 400'