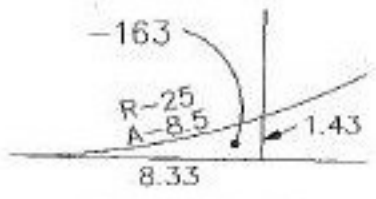
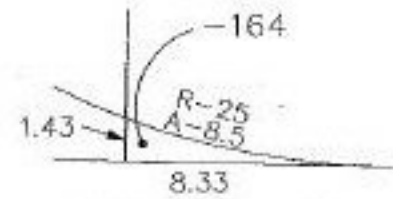


#22107
NO. 22107

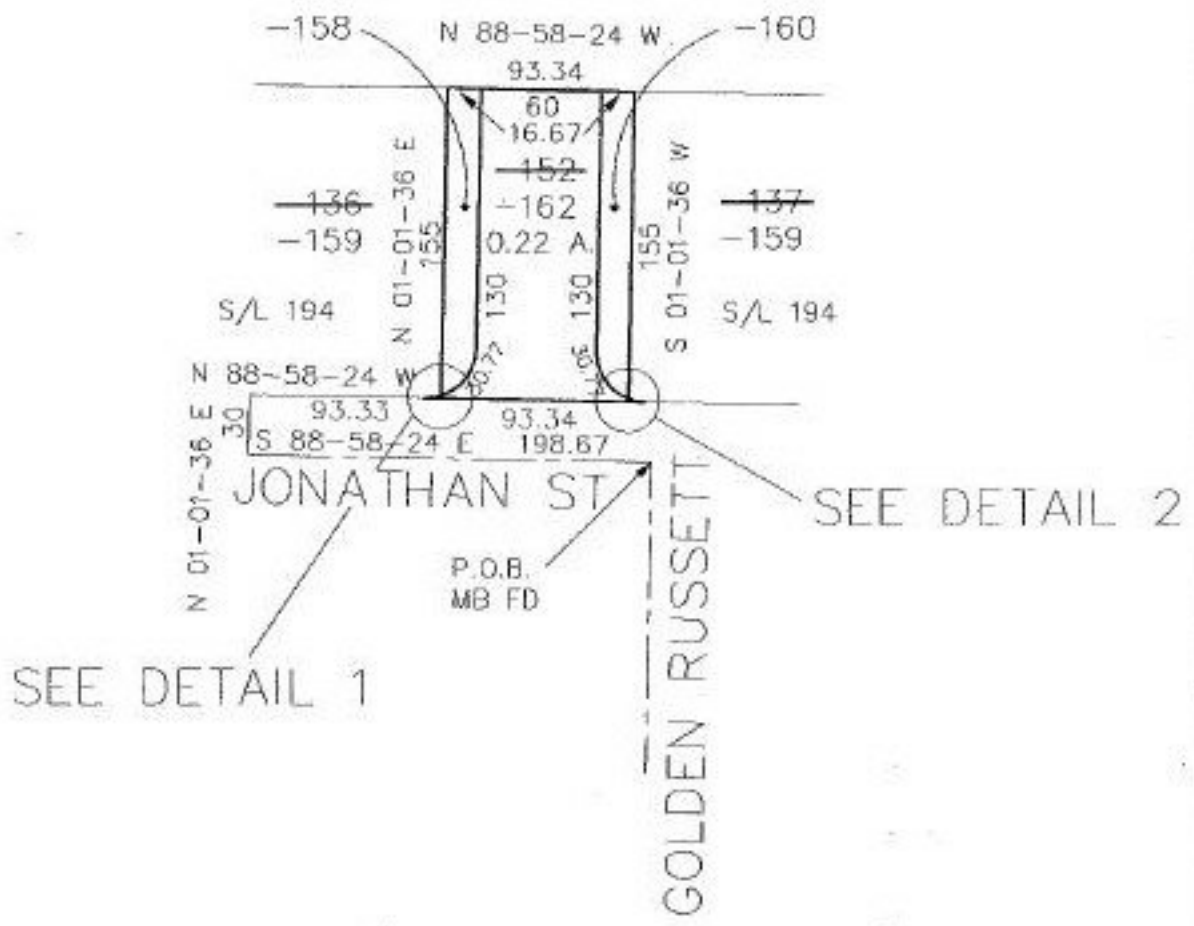
PARENT PARCEL: 05-00-002-000-136, 137 & 152
CHILD PARCEL: 05-00-002-000-158, 160 & 162
STARTING POINT: cl. of Golden Russett Blvd. & cl. of Jonathan St.



DETAIL 1



DETAIL 2



SPLITS/DEEDS PROCESSED
LORAIN COUNTY TAX MAP DEPARTMENT
226 MIDDLE AVE. ELYRIA, OHIO

SURVEYED BY: David L. Elwell
CLOSURE: 0.00 - 10.000
MAP PAGE(S): 05-A
APPROVED BY: KAC/REB DATE: 3-26-97
SCALE: 1" = 100'