

PARENT PARCEL: 16-00-001-101-004 & 11-00-100-105-001

CHILD PARCEL: n/a

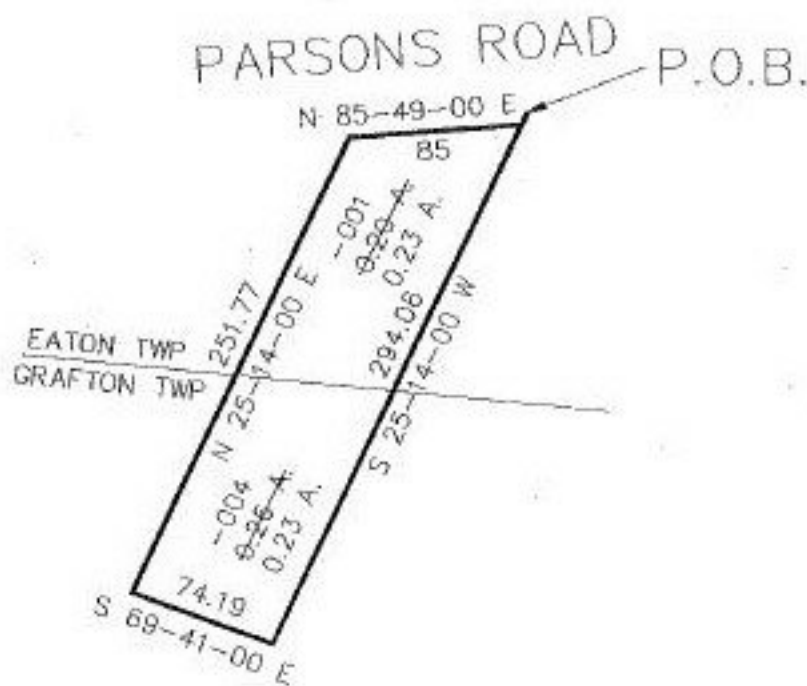
STARTING POINT: SLY LINE PARSONS RD AT NW COR LAURA V. & WALTER E. BAKER

NO. 22104-A

#22104-A



ACREAGE CORRECTION PER
DESCRIPTION RECORDED IN
D.V. 1053 P.705



SEE DEED 1445, P. 936



SPLITS/DEEDS PROCESSED

LORAIN COUNTY TAX MAP DEPARTMENT
226 MIDDLE AVE. ELYRIA, OHIO

SURVEYED BY:	N/A
CLOSURE:	97.89 : 10,000
MAP PAGE(S):	16-00-001B & 11-00-100B
APPROVED BY:	RFB DATE: 03/25/97
SCALE:	1" = 100'