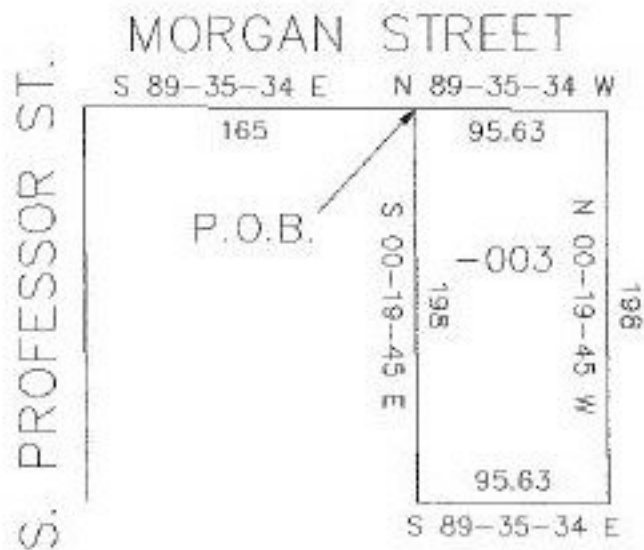
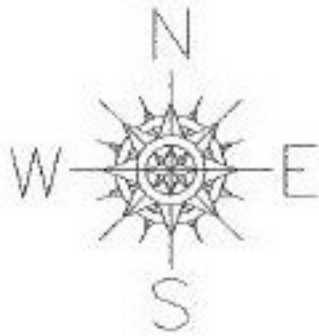


PARENT PARCEL: 09-00-095-104-003

CHILD PARCEL: N/A

STARTING POINT: THE SLY LINE MORGAN ST AT THE NE COR THOMAS J & EVELYN OSTER

NO. 22102-D



EFFECTIVE 9-30-97

Handwritten initials and date: JS, 11-4-97



SPLITS/DEEDS PROCESSED
LORAIN COUNTY TAX MAP DEPARTMENT
226 MIDDLE AVE. ELYRIA, OHIO

SURVEYED BY: JOHN W. WELSH
CLOSURE: 0.00 : 10.000
MAP PAGE(S): 9-00-095B
APPROVED BY: RFB DATE: 04/01/97
SCALE: 1" = 100'