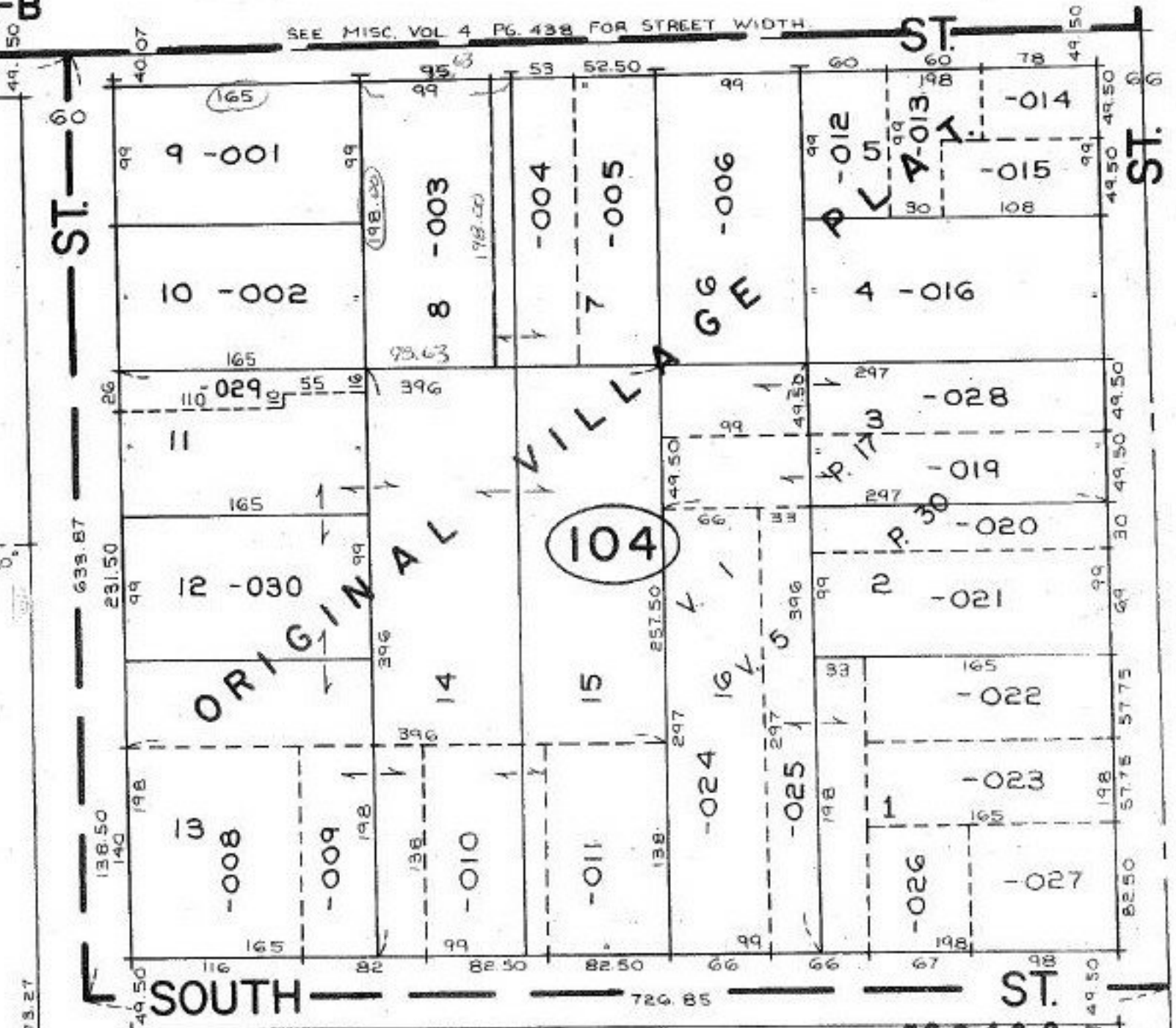


5-B

SEE MISC. VOL 4 PG. 438 FOR STREET WIDTH.



105 - 001

#22102-D

APPROVED  
LORAIN CO.  
MAP DEPT.

DATE 3-31-97  
BY R. BELL JM  
VOID AFTER 22102-D

672.15  
-002  
1.30 A.  
672.36

R.