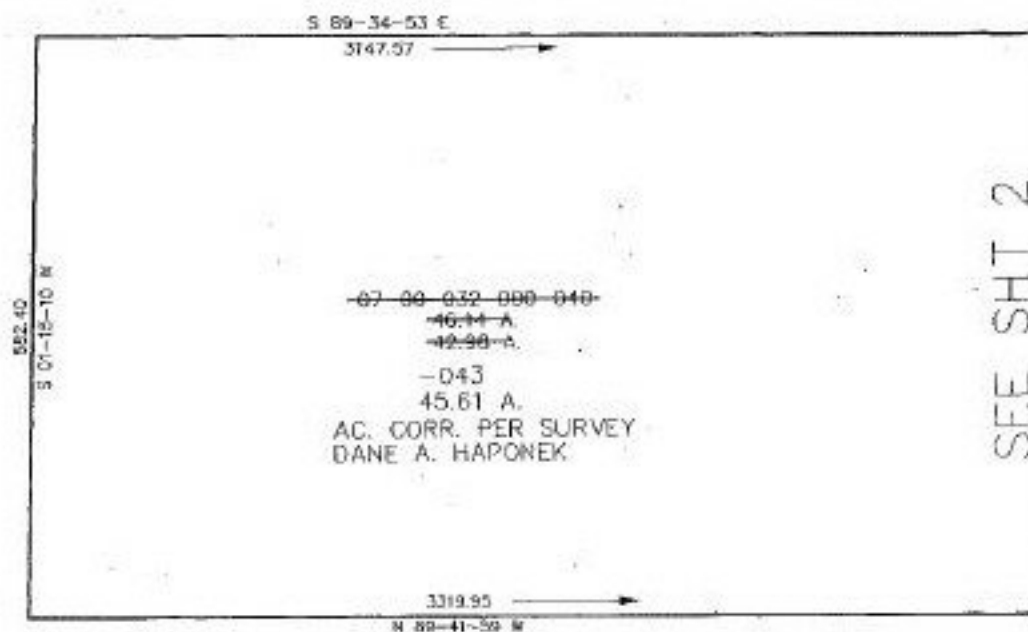


PARENT PARCEL: 07-00-029-000-091 & 07-00-032-000-040

CHILD PARCEL: SEE SHEET 1

STARTING POINT: INTERSECTION STONEY RIDGE RD & BARRES RD

NO. 22102



SEE SHT 2

SHEET 3 OF 3



SPLITS/DEEDS PROCESSED  
LORAIN COUNTY TAX MAP DEPARTMENT  
226 MIDDLE AVE. ELYRIA, OHIO

SURVEYED BY: DANE A. HAPONEK  
CLOSURE: 0.24 : 10,000  
MAP PAGE(S): 7-00-029C & 7-B  
APPROVED BY: RFB DATE: 03/25/97  
SCALE: 1" = 200'