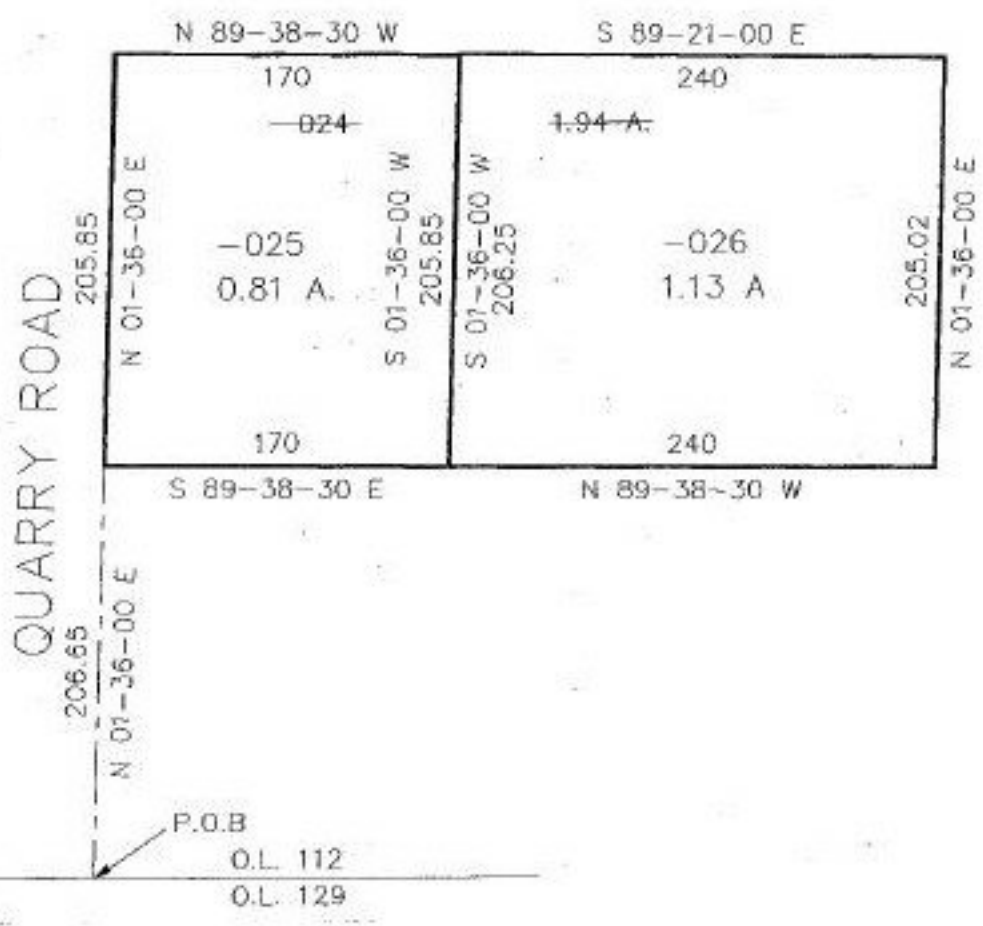


#22099-D
NO. 22099-D

PARENT PARCEL: 14-00-112-000-024
CHILD PARCEL: 14-00-112-000-025 & -026
STARTING POINT: CL QUARRY RD AT INT SECTION SOUTH LINE O.L. 112



UN-COMBINATION PER DESCRIPTION
IN O.R. 1442 P.861 & O.R. 796 P.653



SPLITS/DEEDS PROCESSED
LORAIN COUNTY TAX MAP DEPARTMENT
226 MIDDLE AVE. ELYRIA, OHIO

SURVEYED BY: ARNOLD F. KOEPP
CLOSURE: 0.28 : 10,000
MAP PAGE(S): 14-E
APPROVED BY: RFB DATE: 03/24/97
SCALE: 1" = 100'