

#22098
NO. 22098

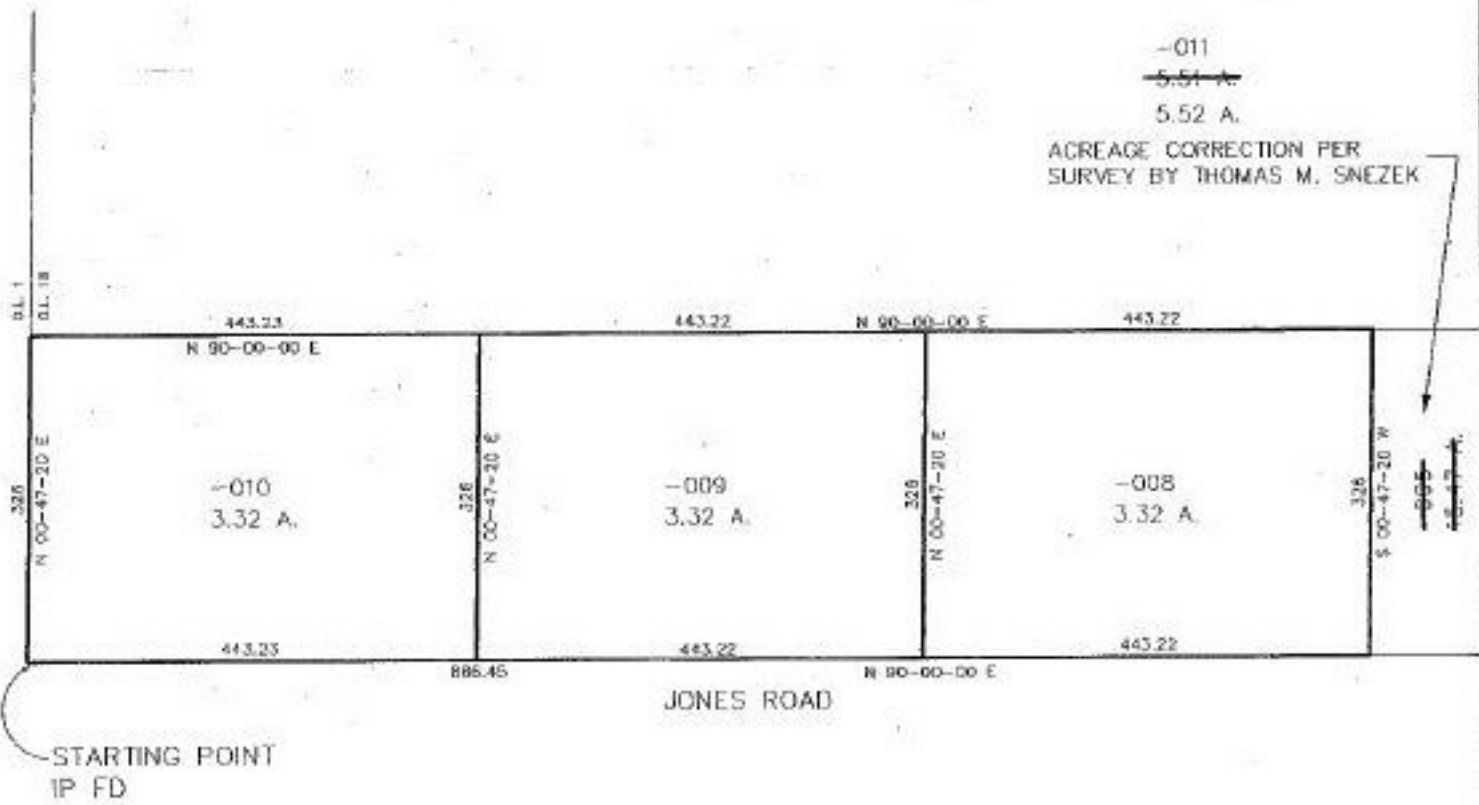
PARENT PARCEL: 19-02-018-000-005

CHILD PARCEL: 19-02-018-000-008, 009, 010

STARTING POINT: CL of Jones Rd. & W. line of O.L. 18



-011
~~5.51 A.~~
5.52 A.
ACREAGE CORRECTION PER
SURVEY BY THOMAS M. SNEZEK



SPLITS/DEEDS PROCESSED
LORAIN COUNTY TAX MAP DEPARTMENT
226 MIDDLE AVE. ELYRIA, OHIO

SURVEYED BY: Thomas M. Snezek
CLOSURE: 0.00 : 10,000
MAP PAGE(S): 19-F
APPROVED BY: KAC/REB DATE: 3-19-97
SCALE: 1" = 200'