

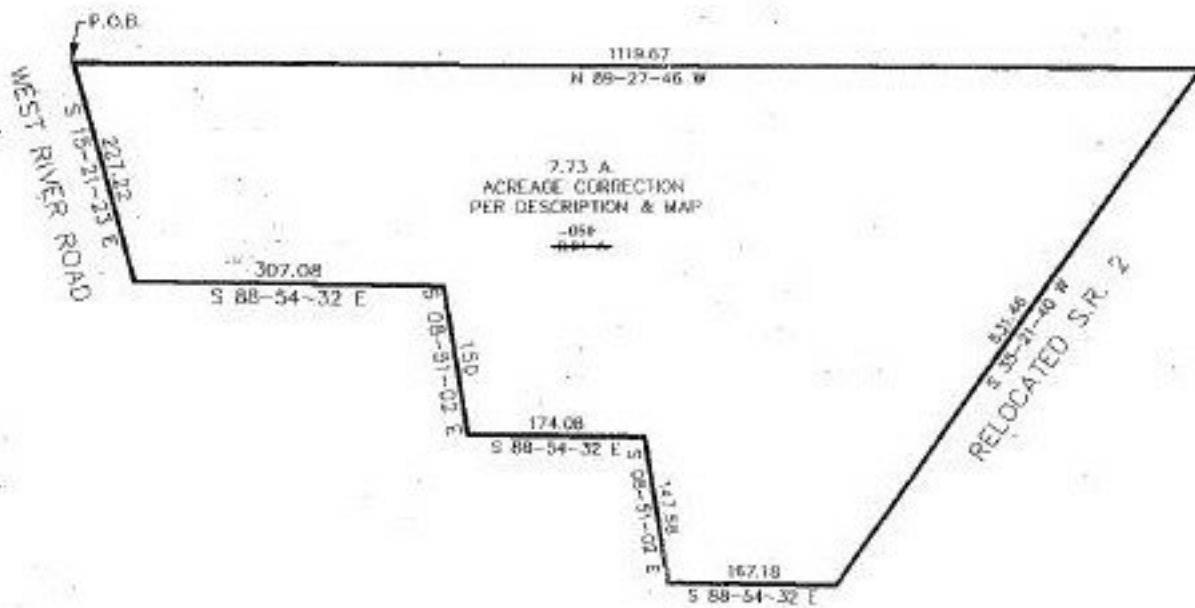
#22095-D

PARENT PARCEL: 01-00-032-000-059

CHILD PARCEL: N/A

STARTING POINT: INTERSECTION W. R/W WEST RIVER RD & NORTH LINE OF 32

NO. 22095-D



SPLITS/DEEDS PROCESSED
 LORAIN COUNTY TAX MAP DEPARTMENT
 226 MIDDLE AVE. ELYRIA, OHIO

SURVEYED BY: _____
 CLOSURE: 0.08 : 10.000
 MAP PAGE(S): 01-00-032 A&B
 APPROVED BY: REB DATE: 03-20-97
 SCALE: 1"=200