

#22094

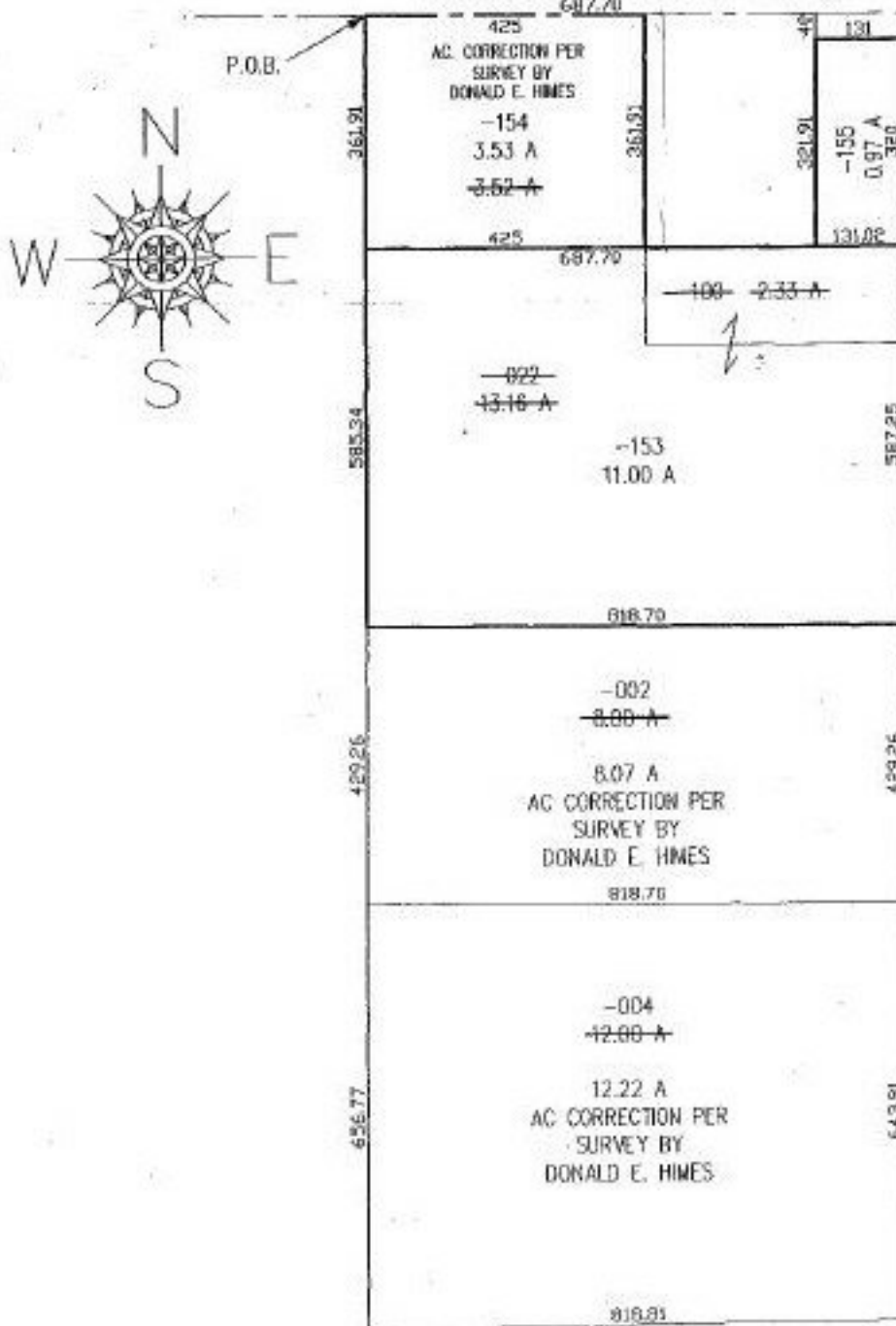
NO. 22094

PARENT PARCEL: 04-00-024-101-022 & -100

CHILD PARCEL: 04-00-024-101-153

STARTING POINT: NW COR SECTION NO 24 ALSO IN CL RIEGELBERGER

RIEGELSBERGER ROAD



SPLITS/DEEDS PROCESSED

LORAIN COUNTY TAX MAP DEPARTMENT
226 MIDDLE AVE. ELYRIA, OHIO

SURVEYED BY: DONALD E. HIMES

CLOSURE: 0.01 : 10,000

MAP PAGE(S): 4-00-024A

APPROVED BY: KAD/REB DATE: 03/07/97

SCALE: 1" = 300'