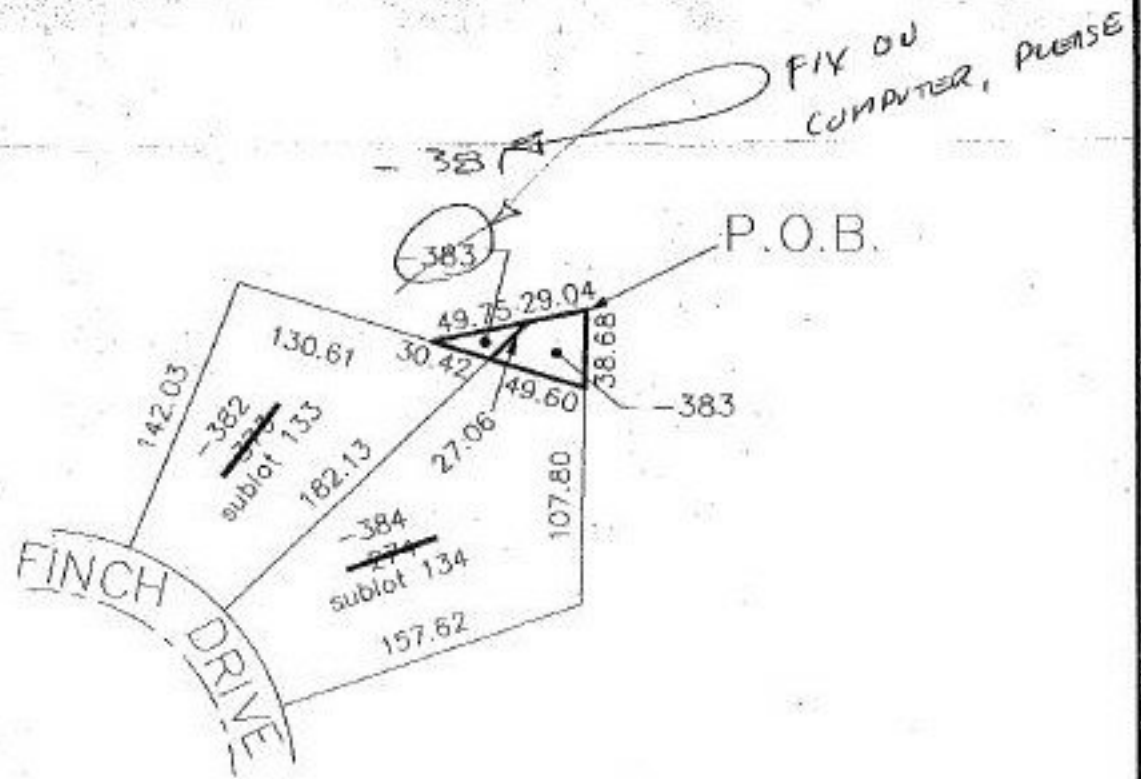


PARENT PARCEL: 10-00-005-107-274 & 373

CHILD PARCEL: 10-00-005-107-381 & -383

STARTING POINT: NE corner of Robin Park Sub. 6 (northerly corner subplot 134)

22083
No. 22083



SPLITS/DEEDS PROCESSED

LORAIN COUNTY TAX MAP DEPARTMENT
226 MIDDLE AVE. ELYRIA, OHIO

SURVEYED BY: Rodger G. Simon

CLOSURE: 0.52 : 10.000

MAP PAGE(S): 10-00-005-H

APPROVED BY: KAC/RFB DATE: 3-17-97

SCALE: 1=100