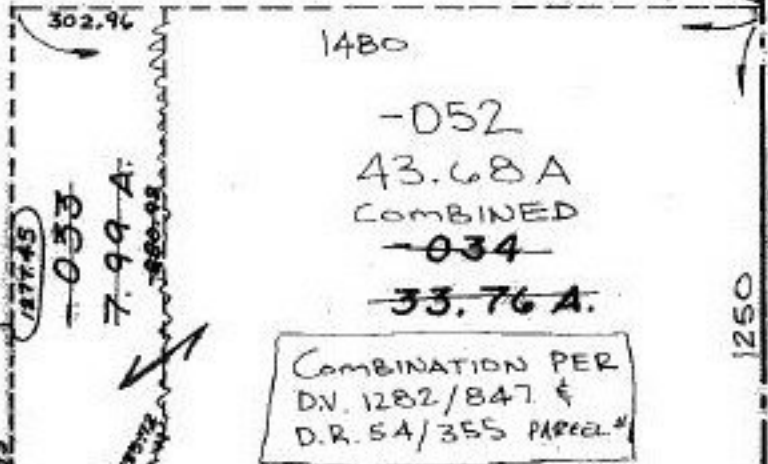


C

Pt. -049  
Pt. 118.89 A.

K 07-008-A A



S.R. 18

EDINA-NORWALK

2070 TO  
E SR 511

COMBINATION #22078-D

APPROVED
LORAIN CO.
MAP DEPT.
DATE 2-20-97
PAGE 17-C
BY R. BELL
# 22078-D