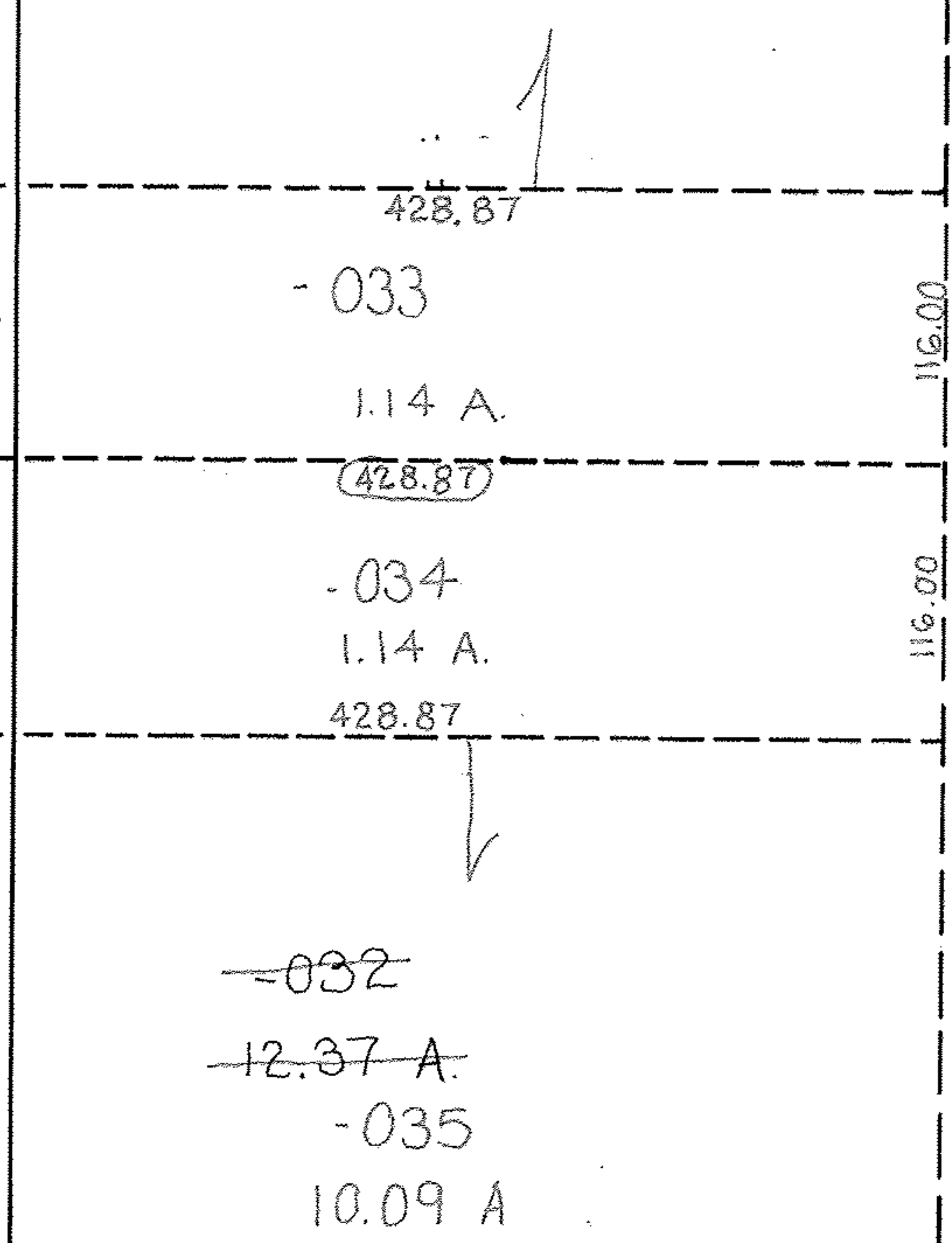
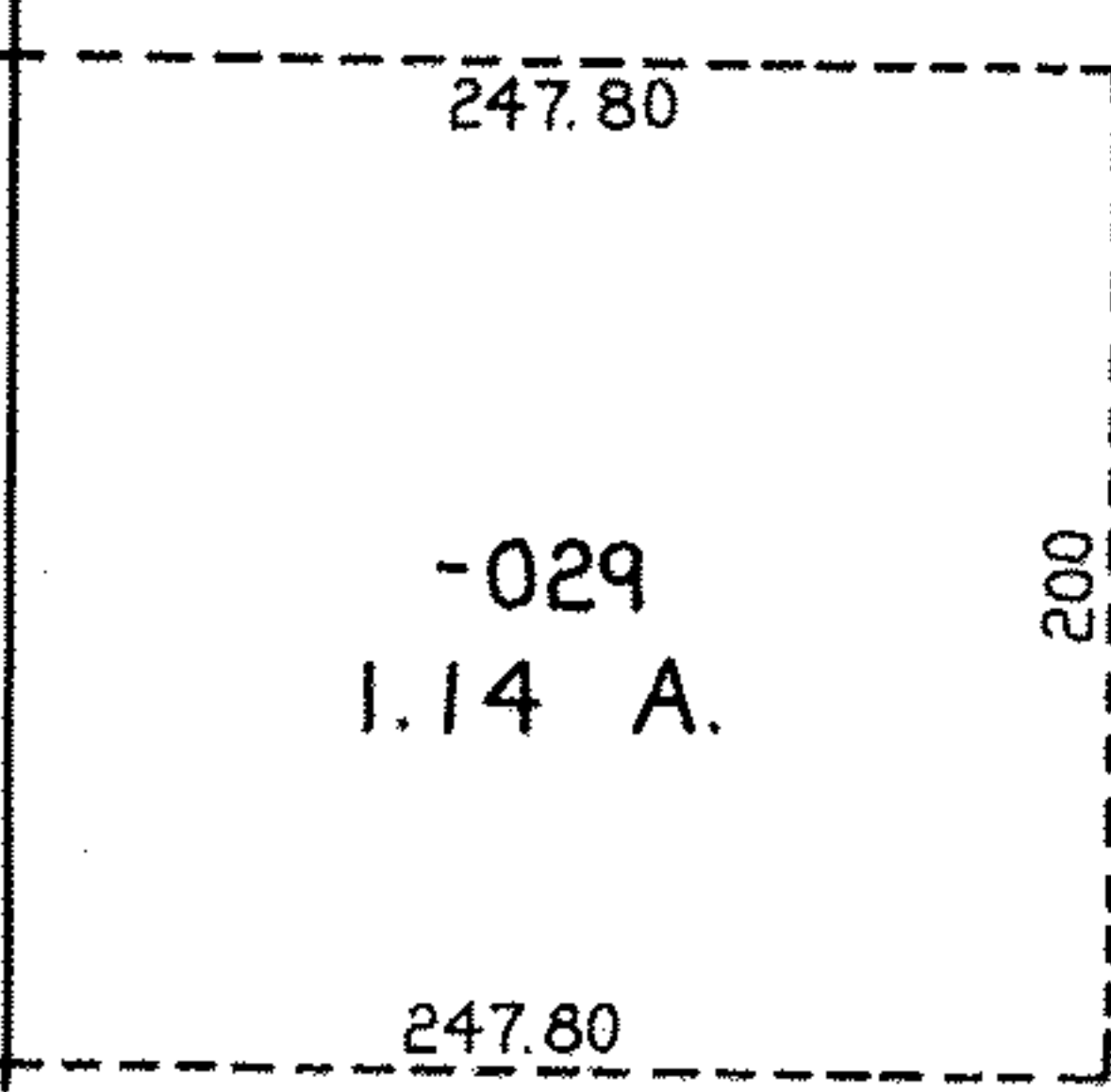


E PYLE S. AMHERST RD. & E S.R. 511 (WEST LORAIN)



PRIOR INSTRUMENT OR 1357/665
 CLOSURE 0.00 PER 10,000
 SURVEYED BY RODGER G. SIMON

EFFECTIVE 9/30/97



#22061

APPROVED
LORAIN CO.
MAP DEPT

DATE 2/4/97

PAGE 9-00-074-A

BY K. DYE

#22061

TS
11-3-97

