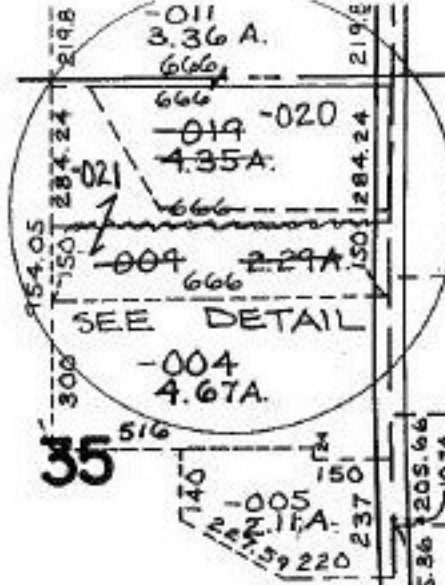
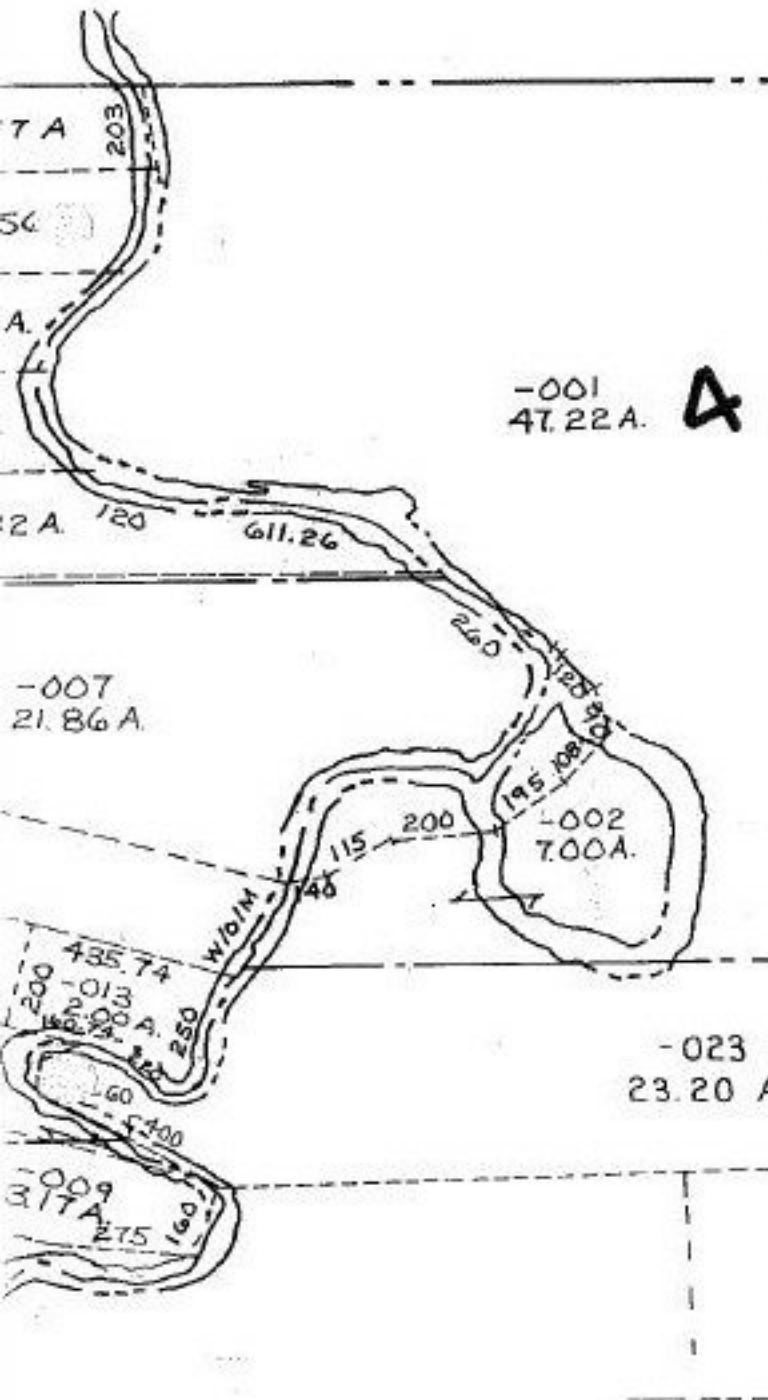
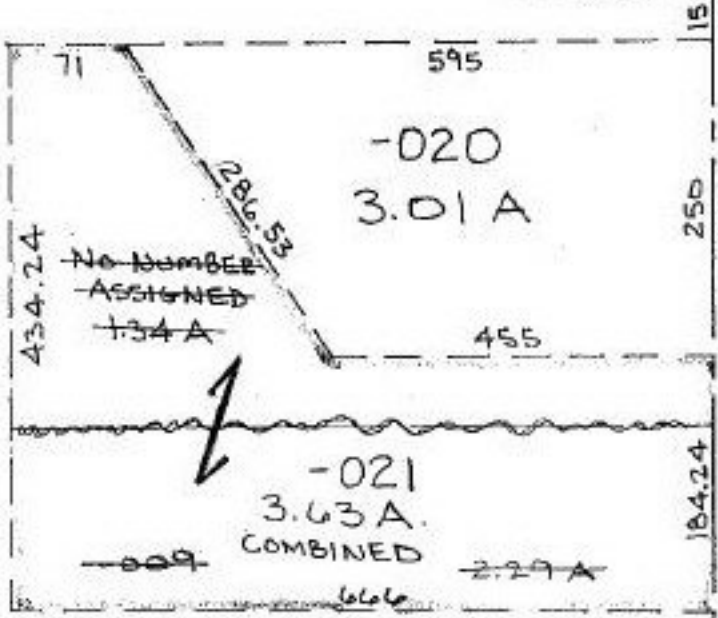


#22057



-006	6.91A.	491.47	275
-007	5.02A.	491.47	275
-018	4.07A.	803.75	223.93
-015	3.97A.	808.55	215.06
-013	3.94A.	793.77	215.06
-017	3.90A.	786.87	215.06
-011	3.87A.	787	215.06

FOSTER



PRIOR INSTRUMENT 1349/479  
 CLOSURE Q.O.L PER 10,000  
 SURVEYED BY JAMES B. ROBERTS

22057

APPROVED
LORAIN CO.
MAP DEPT.
DATE 1-30-97
PAGE 19-C
BY R. BELL
MAP # 22057

DETAIL - NO SCALE