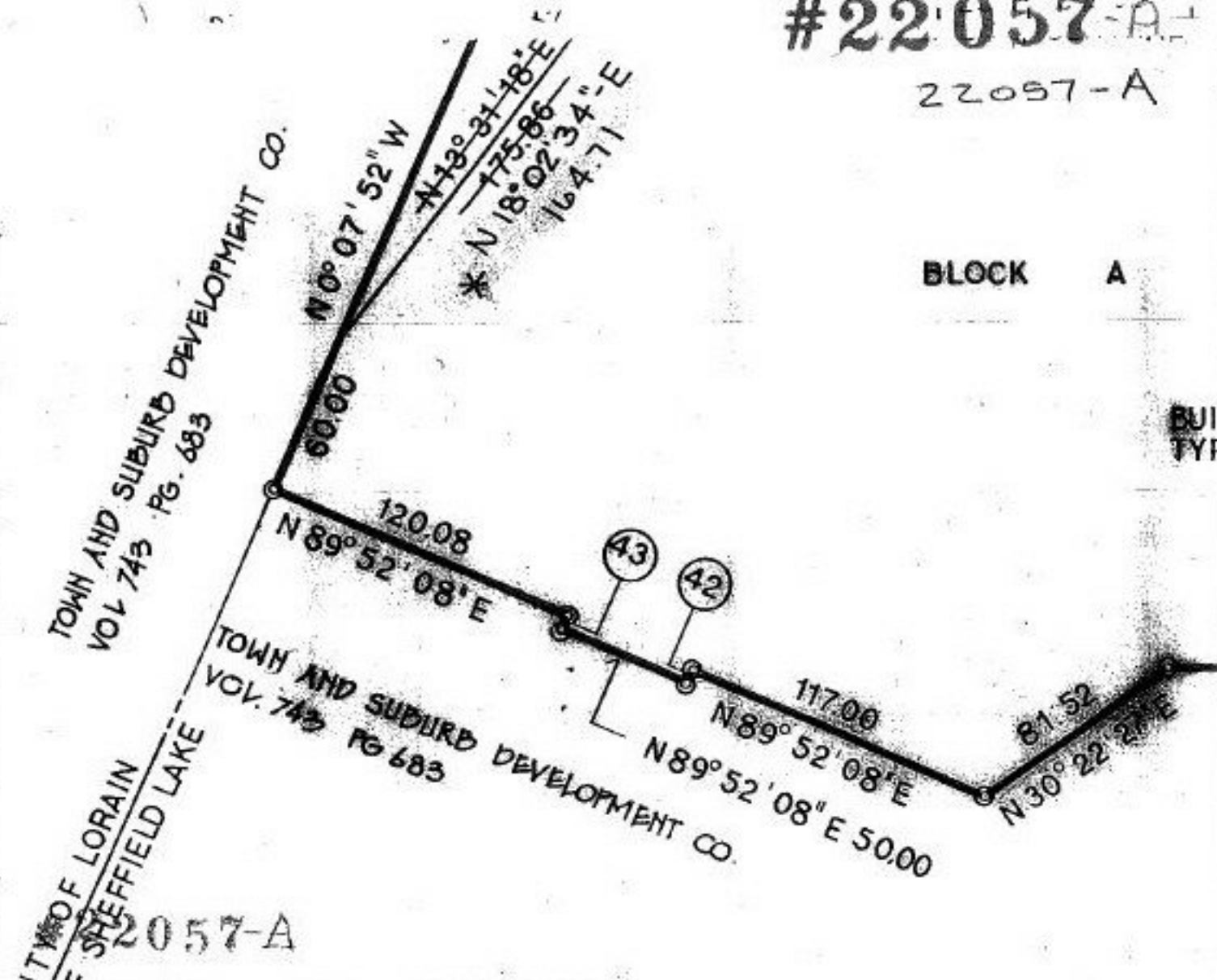


#22057-A

22057-A

BLOCK A

BUILDING TYPE



APPROVED
 LORAIN CO.
 MAP DEPT.
 DATE 2-14-92
 PAGE PV 50 P. 70
 BY R. BEU
 # 22057-A

SURVEYORS CERTIFICATE:
 THIS IS TO CERTIFY THAT THIS FOREGOING PLAT OF UPLAND GLEN WAS MADE AT THE REQUEST OF THE OWNERS, TOWN AND SUBURB DEVELOPMENT CO. AND SUNRISE DEVELOPMENT CO., EMBRACING 12.135 ACRES OF L. NO. 45 OF SHEFFIELD TOWNSHIP, NOW WITHIN THE CORPORATE LIMITS SHEFFIELD LAKE. AT ALL POINTS SHOWN THIS IRON PIN MONUMENTS DISTANCES SHOWN ARE IN FEET AND DECIMAL PARTS THEREOF. ALL TO BE CORRECT.

6.174 ACRES IN LOTS
 * 2.978 0.645 ACRES IN BLOCK 'A'
 0.7026 0.636 ACRES IN BLOCK 'B' (OPEN SPACE)
 2.279 ACRES IN STREETS

[Signature]
 REGISTERED

CITY COUNCIL:
 THIS IS TO CERTIFY THAT THIS FOREGOING PLAT OF UPLAND GLEN IS HEREBY APPROVED BY THE COUNCIL OF THE CITY OF SHEFFIELD
 12-29-92 *[Signature]*