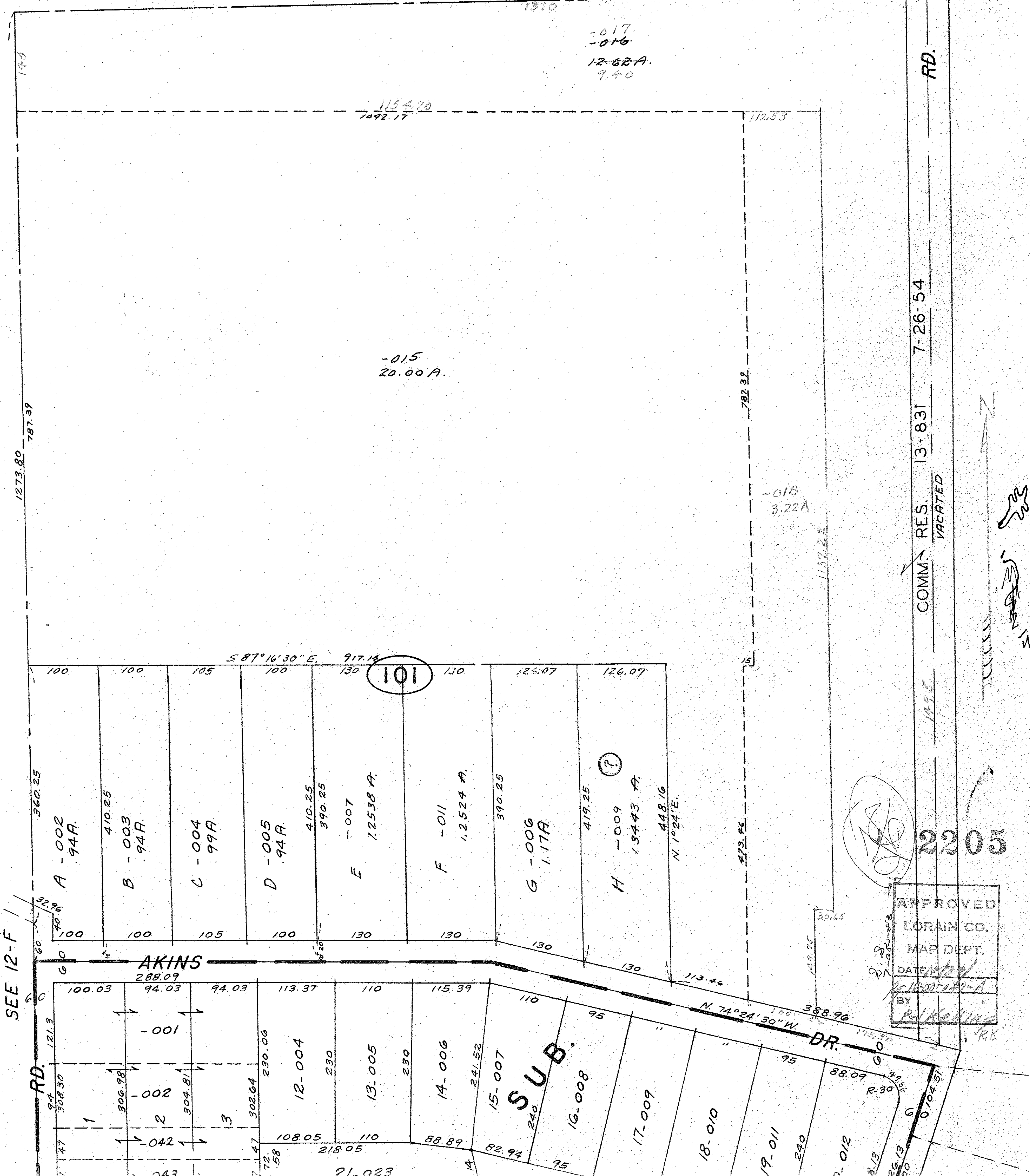


SEE 12-00-046-A



-015  
20.00 A.

1310  
-017  
-016  
12-62A.  
9.40

1154.70  
1092.17

112.55

787.32

-018  
3.22A

1137.22

RD.

13-831

COMM. RES. VACATED

7-26-54

1995

2205

APPROVED  
LORAIN CO.  
MAP DEPT.

DATE 4/24/01  
BY R. K. King

SEE 12-F

RD.

AKINS

SUB.

DR.

30.65

149.25

149.25

149.25

149.25

149.25

149.25

149.25

149.25

149.25

149.25

149.25

149.25

149.25

149.25

149.25

149.25

149.25

149.25

149.25

149.25

149.25

149.25

149.25

149.25

149.25

149.25

149.25

149.25

149.25

149.25

149.25

149.25

149.25

149.25

149.25

149.25

149.25

149.25

149.25

149.25

149.25

149.25

149.25

149.25

149.25

149.25

149.25

149.25

149.25

149.25

149.25

149.25

149.25

149.25

149.25

149.25

149.25

149.25

149.25

149.25

149.25

149.25

149.25

149.25

149.25

149.25

149.25

149.25

149.25

149.25

149.25

149.25

149.25

149.25

149.25

149.25

149.25

149.25

149.25

149.25

149.25

149.25

149.25

149.25

149.25

149.25

149.25

149.25

149.25

149.25

149.25