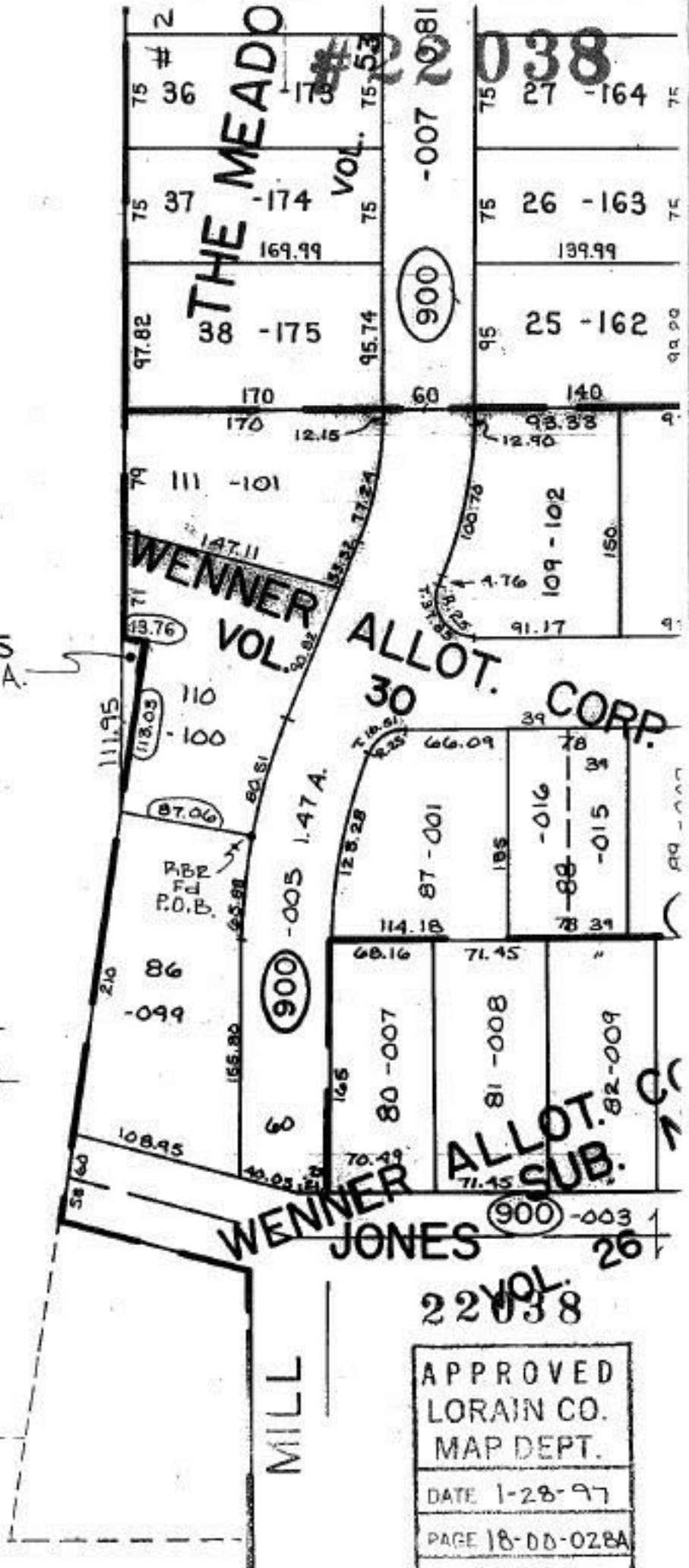


1870
1848.66

-187
-17.72-A
-206
17.70A.

PRIOR INSTRUMENT DV 246-584
CLOSURE 0.12 PER 10,000
SURVEYED BY DAVID L. ELWELL

-205
0.02A.



SEE 18-00-028-C

22 VOL. 2038

APPROVED
LORAIN CO.
MAP DEPT.

DATE 1-28-97

PAGE 18-00-028A

BY R. BELL

VOID
IF NOT # 22038