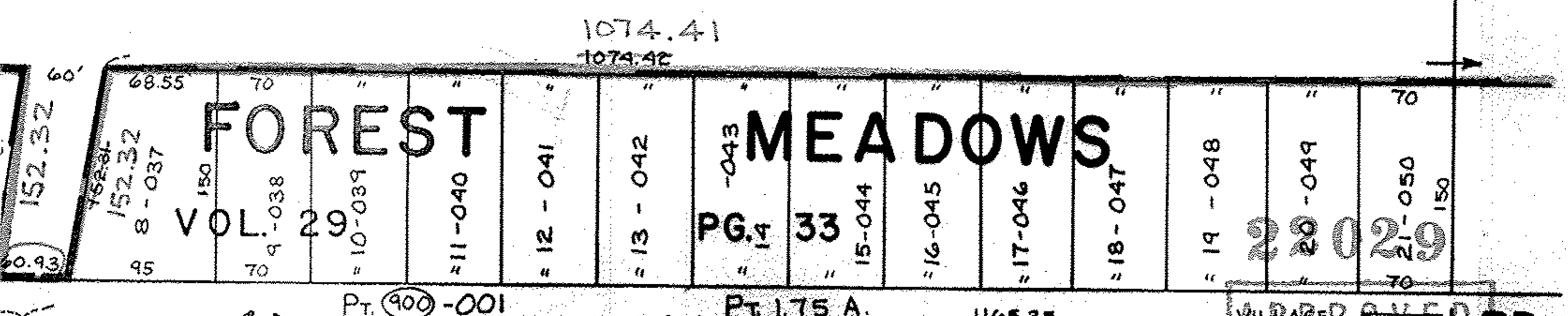


PT. - 067  
PT. 118.78 A.  
# 22029

PT. - 070  
PT. 95.45 A.

SEE 18-00-026-D



SEE 18-F

REDUCED

VILLAGER AVENUE RD.  
TWP  
LORAIN CO.  
MAP DEPT.  
DATE 1-28-97  
PAGE 18-00-026C  
BY R. BELL  
VOID AFTER # 22029