

299.68

140.85

R=30.00

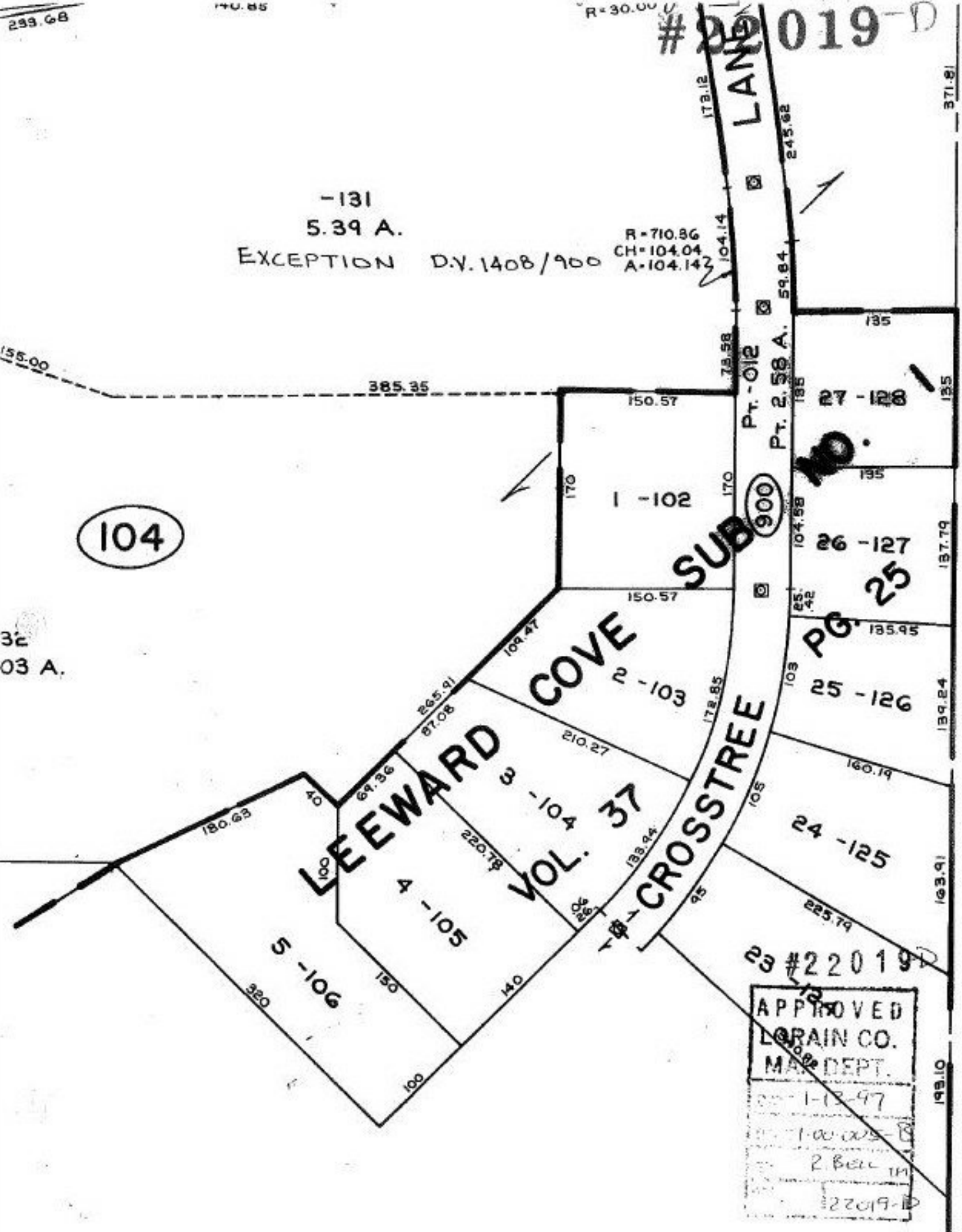
# 22019-D

-131  
5.39 A.  
EXCEPTION D.V. 1408/900

R=710.86  
CH=104.04  
A=104.142

104

32  
03 A.



APPROVED  
 LORAIN CO.  
 MAP DEPT.  
 1-13-97  
 R. Bell  
 22019-D