

SEE 7-00-006-A-1

MILLS CREEK CONDOMINIUM

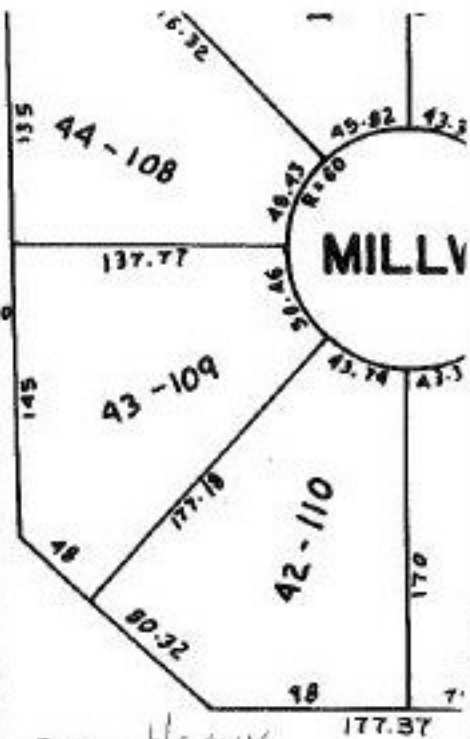
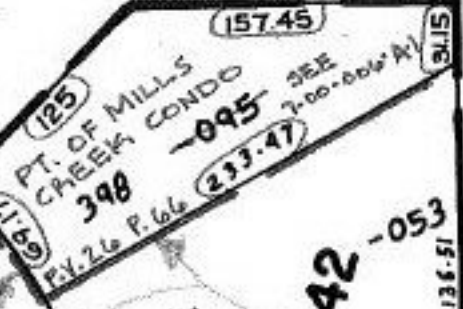
VOL. 26 PGS. 36 THRU 42 D

SEE 7-00-006-A-1

ERN TREE LN.



SECTION 37 THRU



PUT HEAVY LINE ON Pt. -140  
MYLAR Pt. 8.96 A.

MAP CORRECTION ONLY

EFFECTIVE ALS  
R 9-3-97

R. Bell  
5/2/97  
22018-X

APPROVED  
LORAIN CO.  
MAP DEPT.  
DATE 1-03-97  
PAGE 7-00-006A  
BY R. BELL  
VOID AFTER # 22018-X

10 145.45 143.70